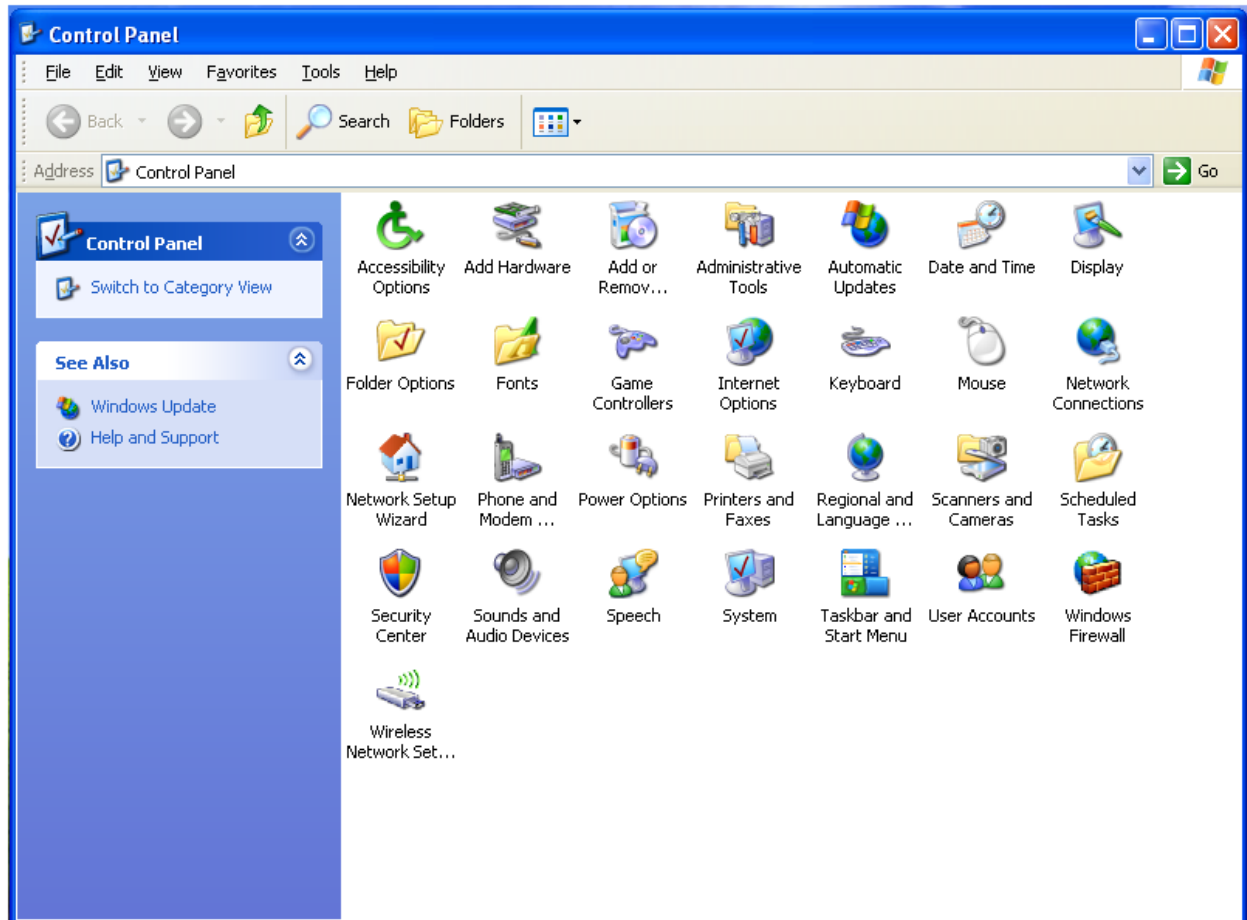


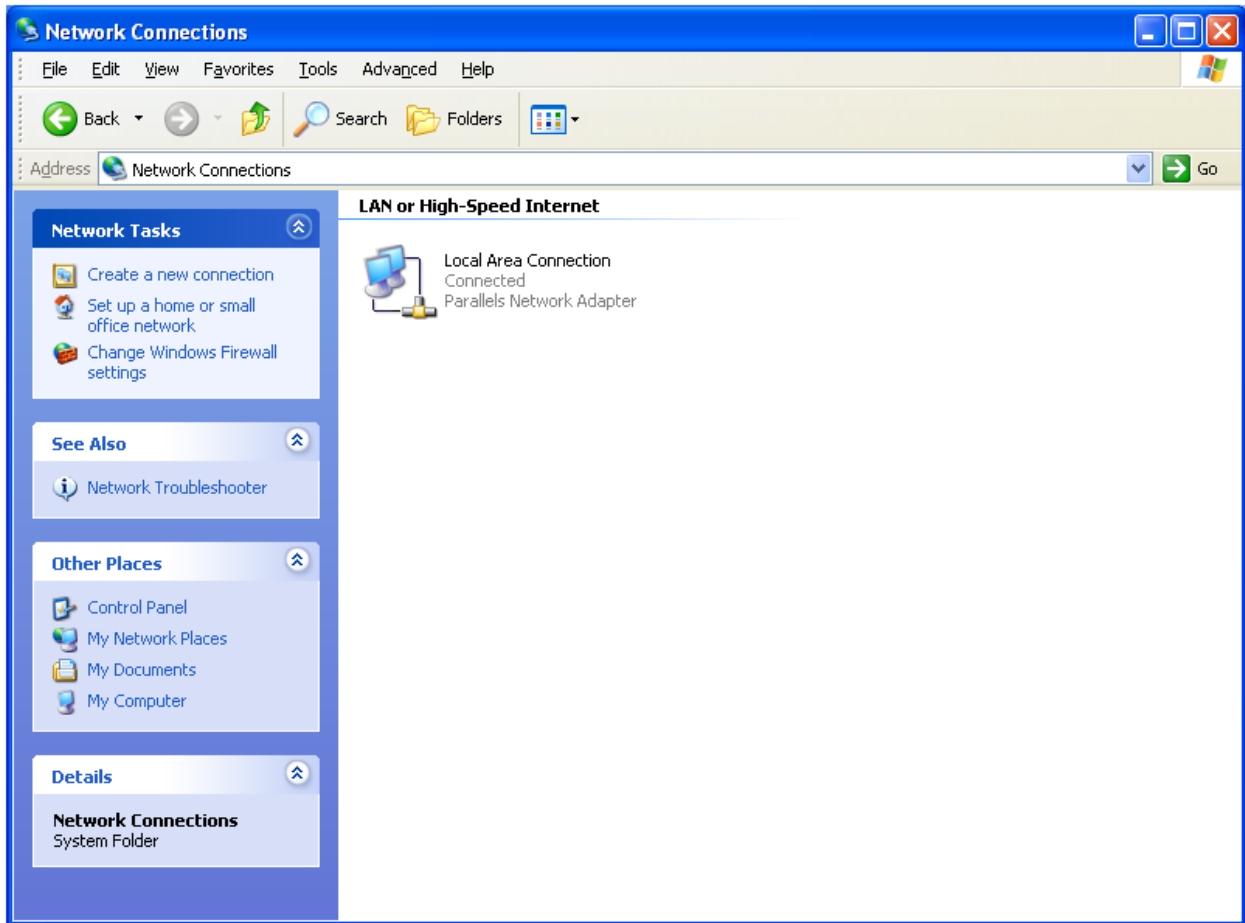
How to Setup a VPN Client for your BRI Hosting VPS

The following steps will guide you through the process of setting up a VPN connection from your Windows XP desktop to your BRI Hosting VPS.

1. Log in to your Windows XP computer. Click on Start > Control Panel.
2. When you are in the Control Panel double-click on the 'Network Connections' icon.



3. In Network Connections click on the 'Create a new connection' link from the left-hand menu:



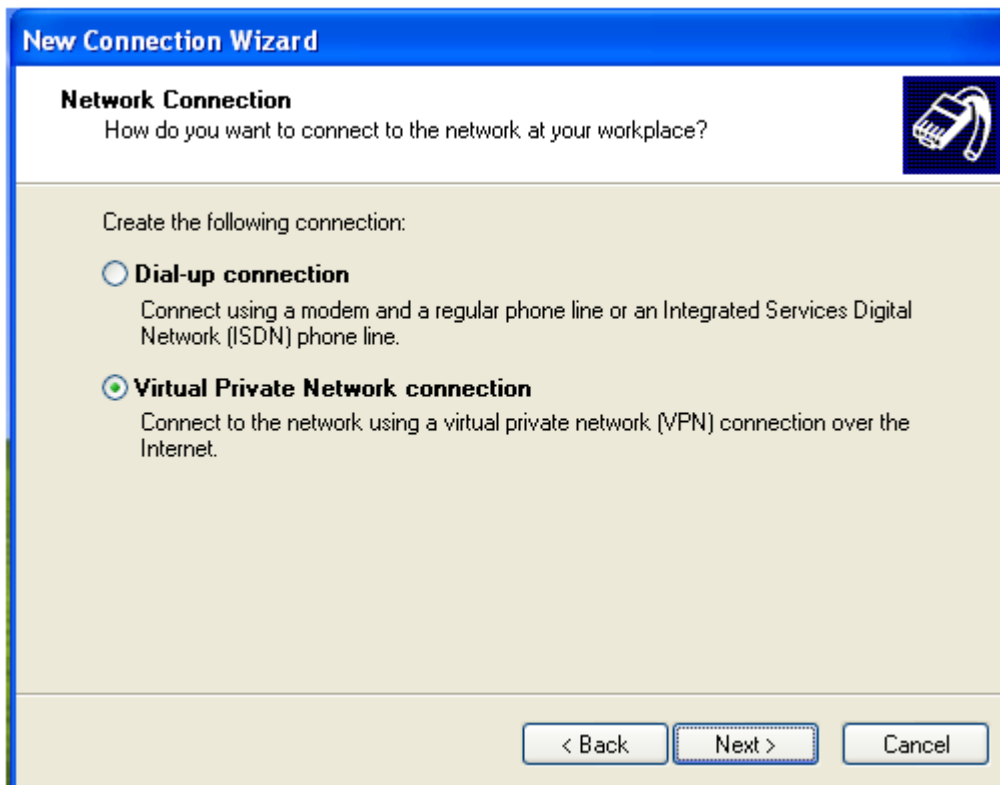
4. When the new connection wizard starts, click on the 'Next' button.



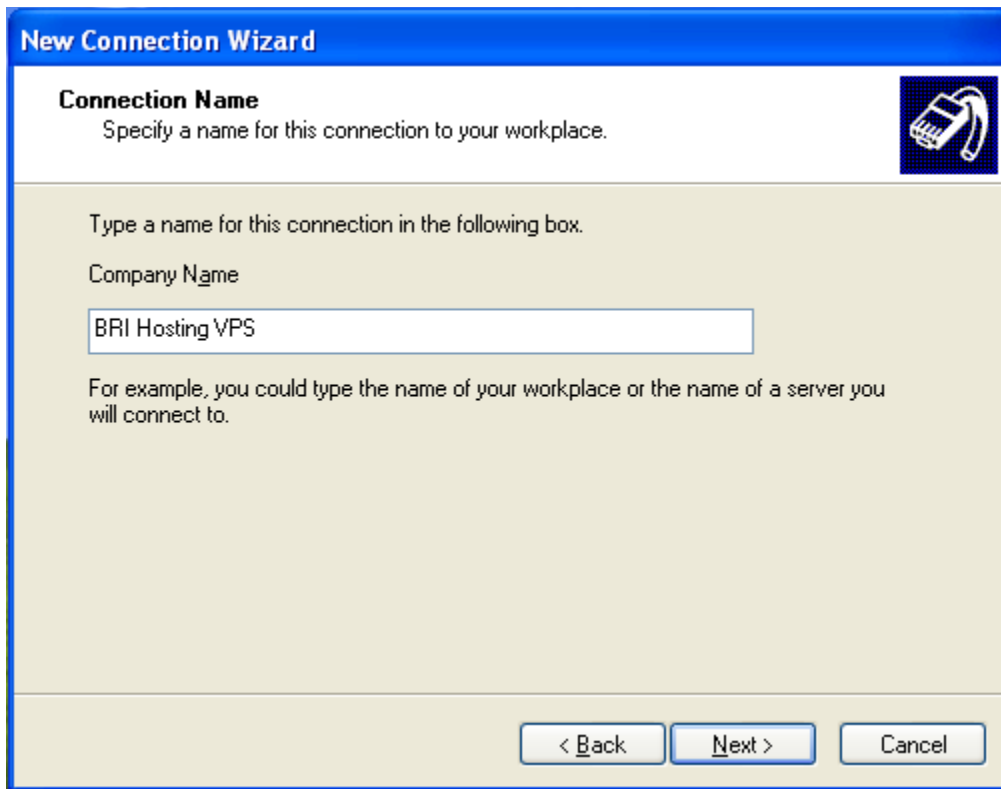
5. Select 'Connect to the network at my workplace' and then click the 'Next >' button.



6. Select 'Virtual Private Network connection' and then click the 'Next >' button.



7. Enter a descriptive name as the company name and then click the 'Next >' button.



New Connection Wizard

Connection Name
Specify a name for this connection to your workplace.

Type a name for this connection in the following box.

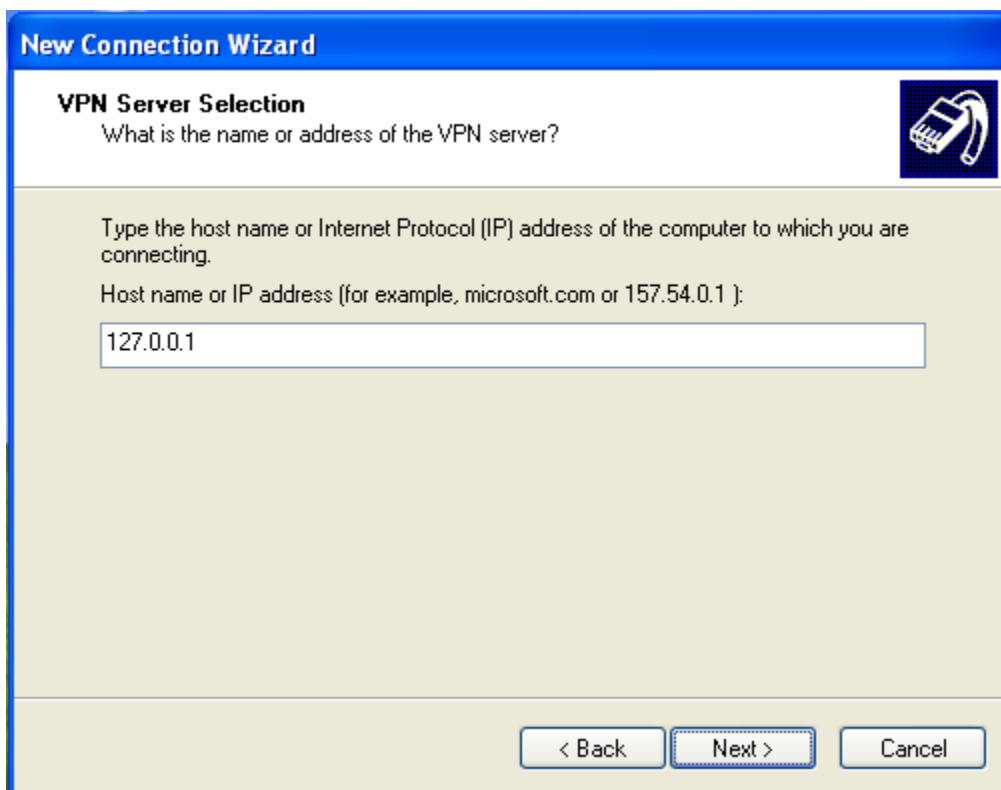
Company Name

BRI Hosting VPS

For example, you could type the name of your workplace or the name of a server you will connect to.

< Back Next > Cancel

8. Enter the **Public IP Address** of your BRI Hosting VPS for the host name or IP address and then click the 'Next >' button.



New Connection Wizard

VPN Server Selection
What is the name or address of the VPN server?

Type the host name or Internet Protocol (IP) address of the computer to which you are connecting.

Host name or IP address (for example, microsoft.com or 157.54.0.1):

127.0.0.1

< Back Next > Cancel

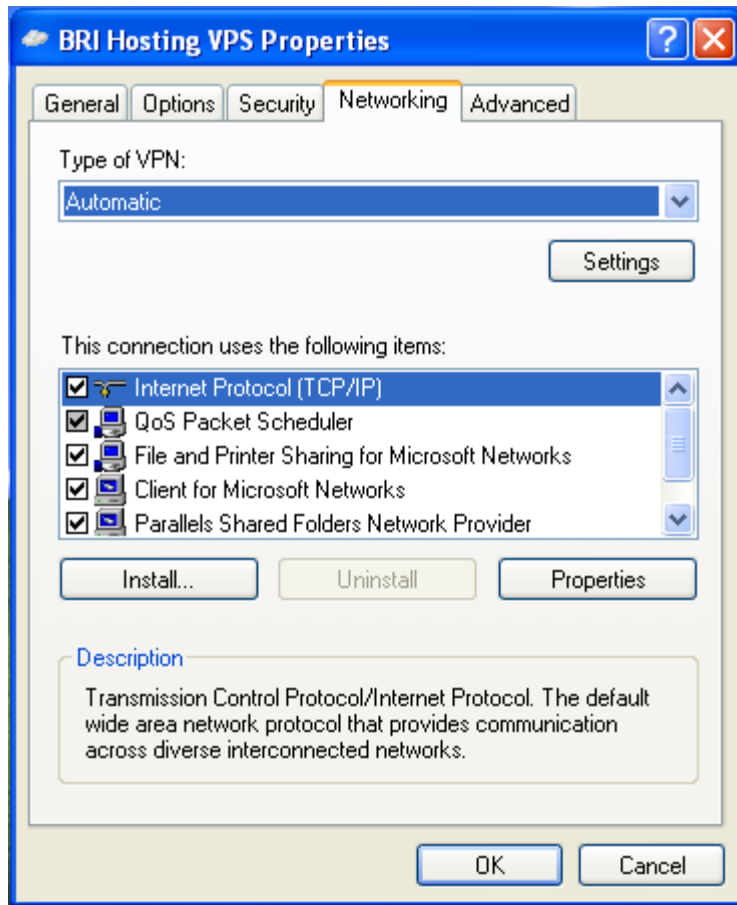
9. When the new connection wizard is completed click the 'Finish' button.



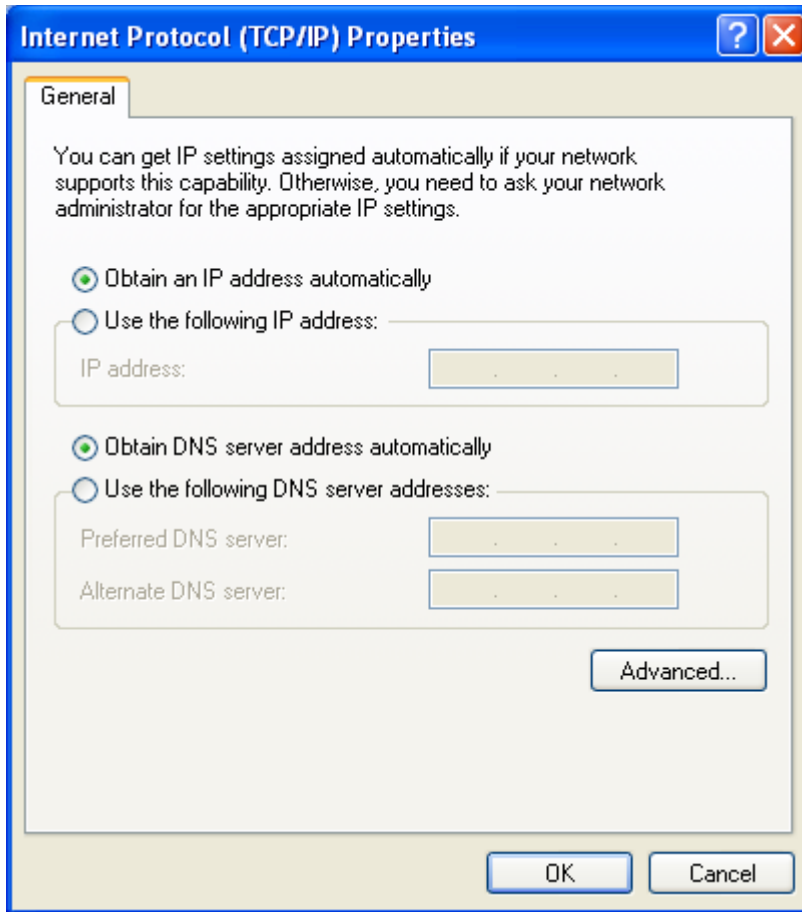
10. When the new connection wizard closes you will be prompted for your user name and password. Before you enter those, click on the 'Properties' button'



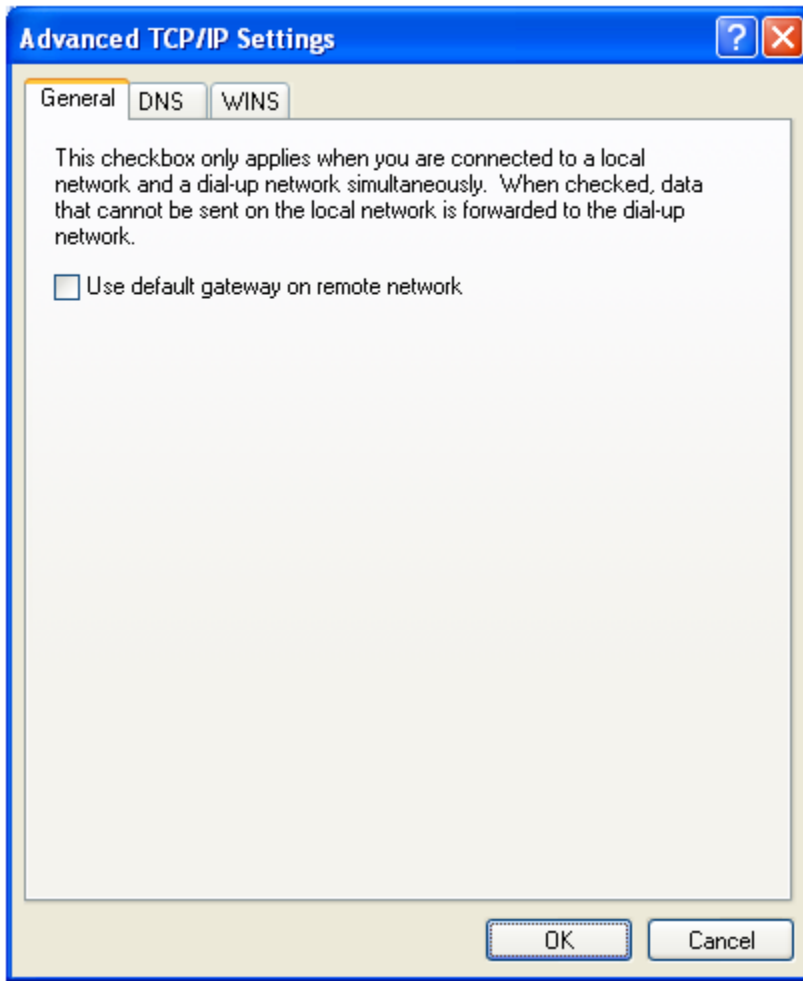
11. In the connection properties window, select the 'Networking' tab. Select the 'Internet Protocol (TCP/IP)' item from the list and then click the 'Properties' button.



12. In the Internet Protocol (TCP/IP) Properties window click on the 'Advanced...' button.



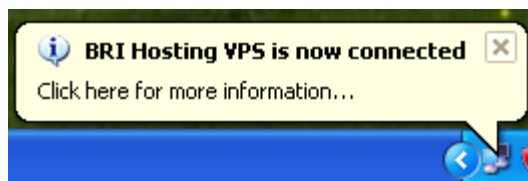
13. Uncheck the 'Use default gateway on remote network' setting and click the 'OK' button.



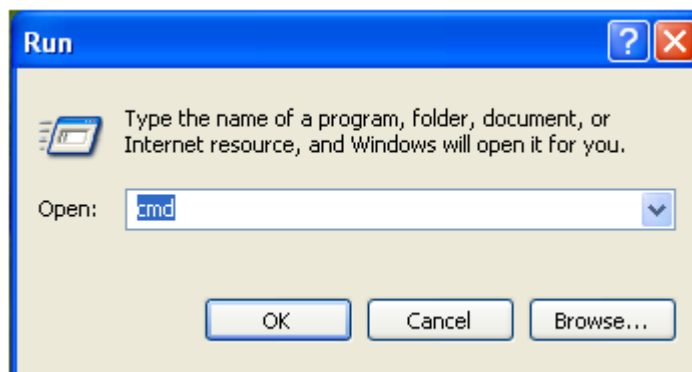
- Click the 'OK' button and the Internet Protocol (TCP/IP) Properties window, and again on the connection properties window.
- When you return to the connection window enter you user name and password and click the 'Connect' button.



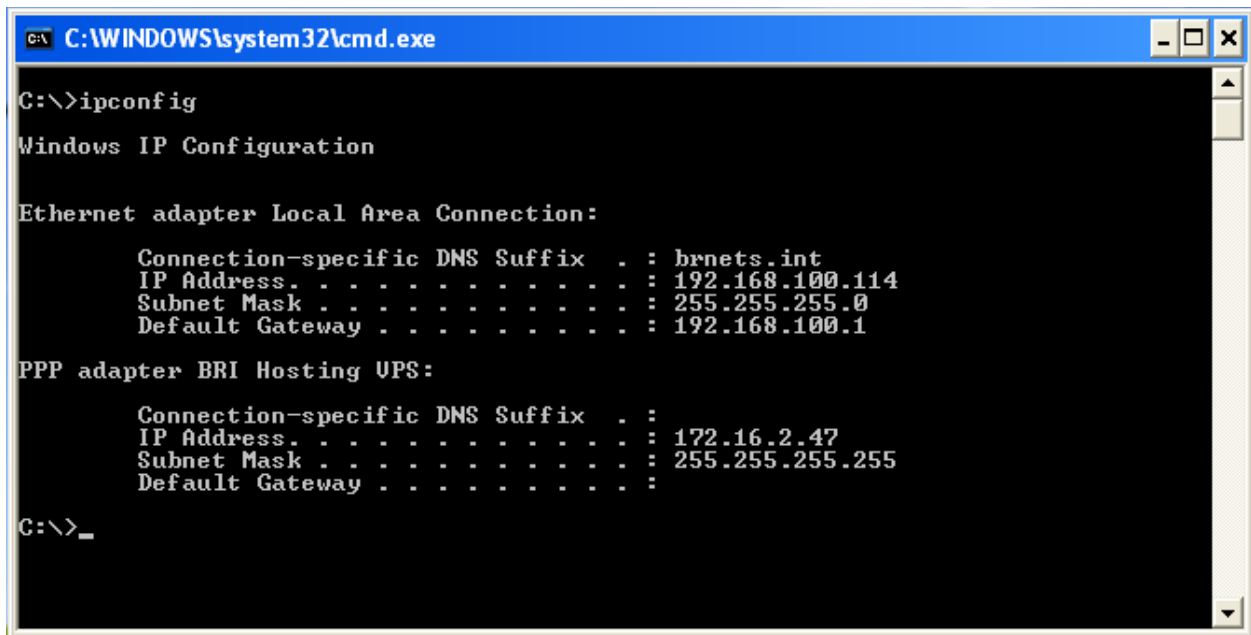
- When you are connected you will likely see a notice in your system tray.



- To verify that you have connected successfully, open a command prompt by clicking Start > Run. Enter 'cmd' and then click the 'OK' button.



18. At the prompt enter 'ipconfig /all' (without the quotes) and hit enter. You should see output that includes 'PPP adapter...'.



```
C:\WINDOWS\system32\cmd.exe
C:\>ipconfig

Windows IP Configuration

Ethernet adapter Local Area Connection:

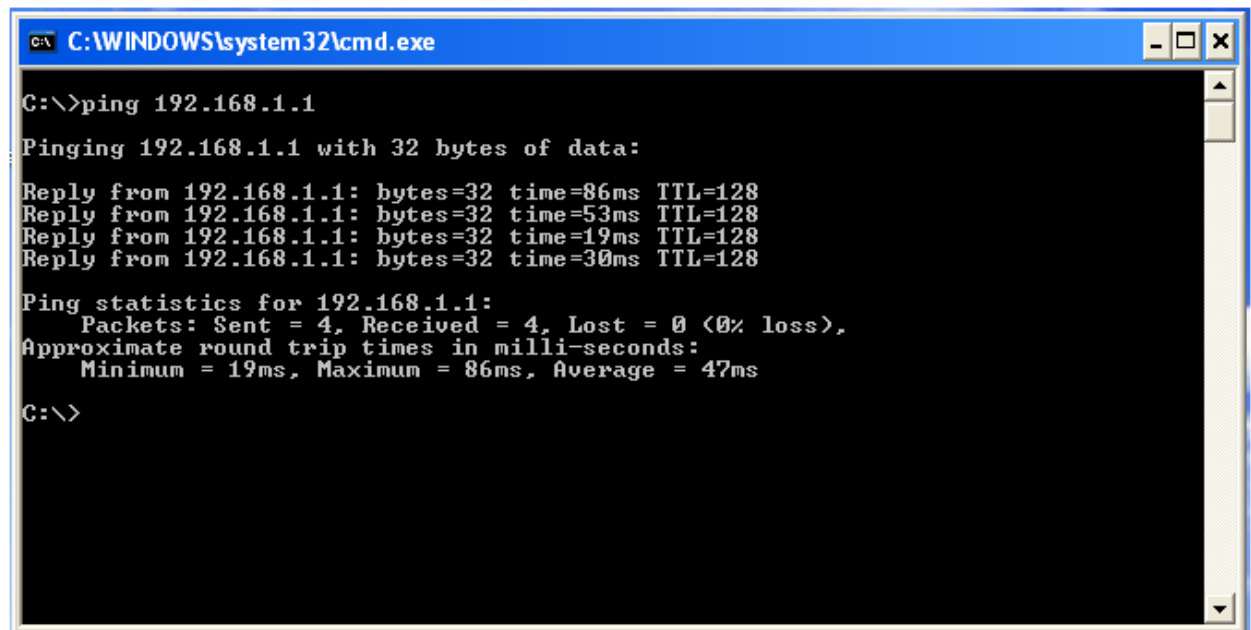
    Connection-specific DNS Suffix  . : brnets.int
    IP Address. . . . .               : 192.168.100.114
    Subnet Mask . . . . .            : 255.255.255.0
    Default Gateway . . . . .        : 192.168.100.1

PPP adapter BRI Hosting UPS:

    Connection-specific DNS Suffix  . :
    IP Address. . . . .             : 172.16.2.47
    Subnet Mask . . . . .           : 255.255.255.255
    Default Gateway . . . . .       :

C:\>_
```

19. Then at the command prompt enter ping and the **Private IP Address** of your BRI Hosting VPS. For example, 'ping 192.168.1.1' (without the quotes). You should see output that includes replies from the IP address you entered.



```
C:\WINDOWS\system32\cmd.exe
C:\>ping 192.168.1.1

Pinging 192.168.1.1 with 32 bytes of data:

Reply from 192.168.1.1: bytes=32 time=86ms TTL=128
Reply from 192.168.1.1: bytes=32 time=53ms TTL=128
Reply from 192.168.1.1: bytes=32 time=19ms TTL=128
Reply from 192.168.1.1: bytes=32 time=30ms TTL=128

Ping statistics for 192.168.1.1:
    Packets: Sent = 4, Received = 4, Lost = 0 (0% loss),
    Approximate round trip times in milli-seconds:
        Minimum = 19ms, Maximum = 86ms, Average = 47ms

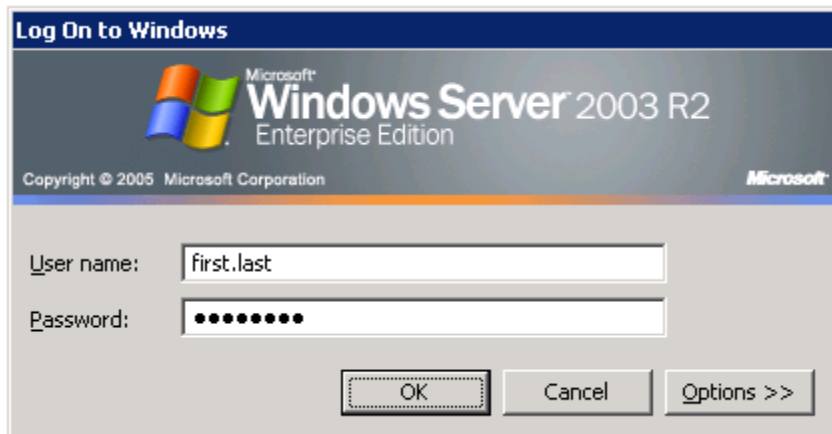
C:\>
```

To log in to your BRI Hosting VPS

1. Click on Start > All Programs > Accessories > Remote Desktop Connection. Enter the **Private IP Address** of you BRI Hosting VPS as the computer and click the 'Connect' button.



2. You will be prompted to enter your user name and password to log on to Windows. Enter your user name and password and click the 'OK' button.



3. **You are now connected your BRI Hosting VPS over a secure connection!**