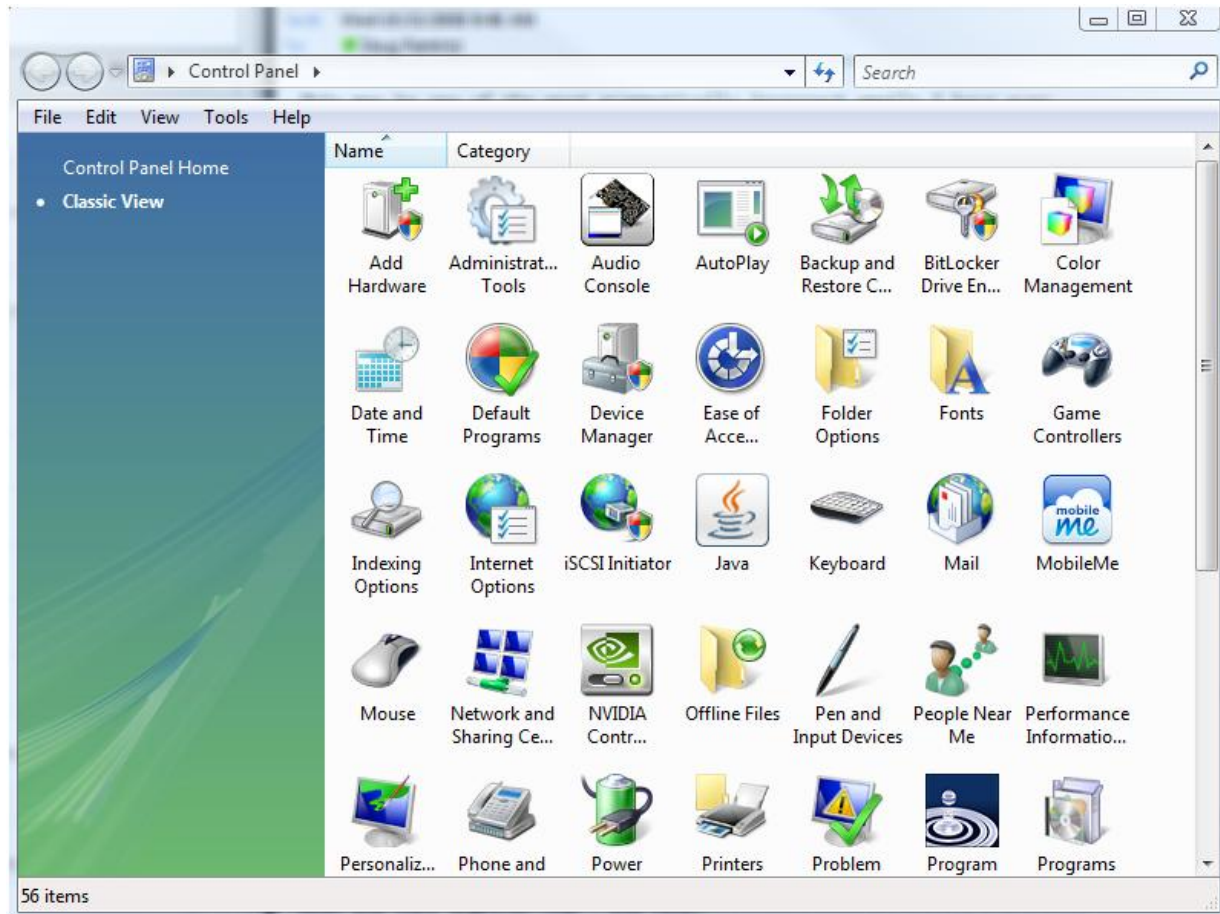


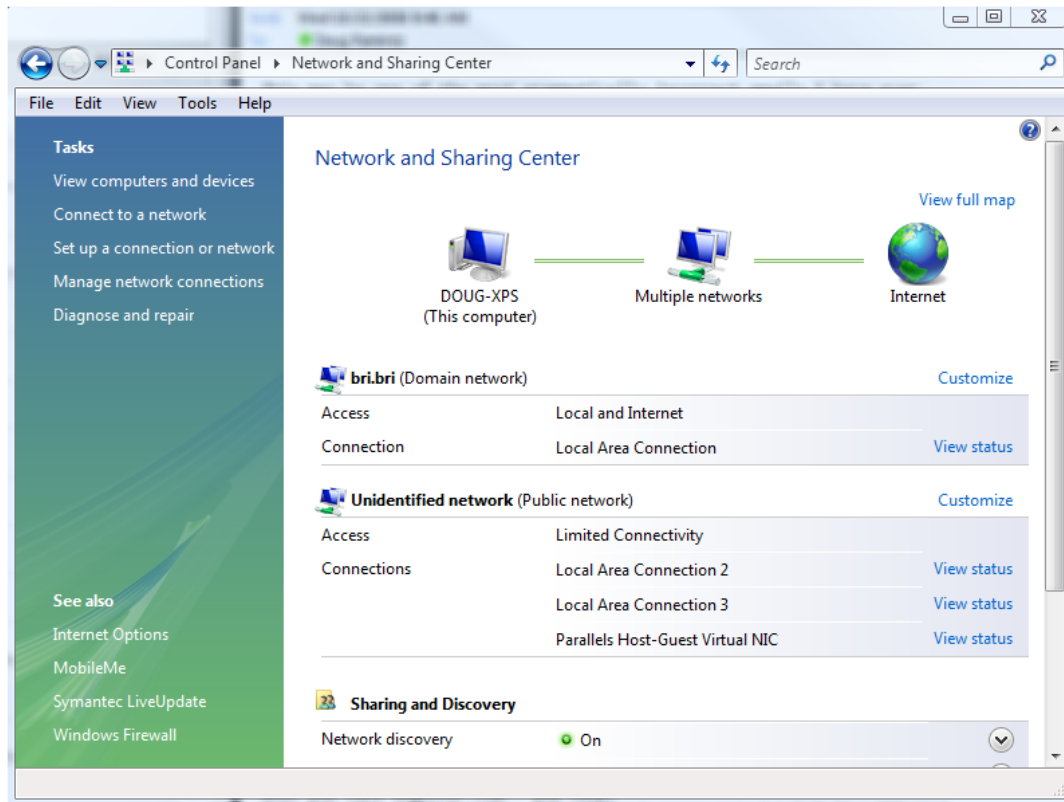
How to Setup a VPN Client for your BRI Hosting VPS

The following steps will guide you through process of setting up a VPN connection from your Windows Vista desktop to your BRI Hosting VPS.

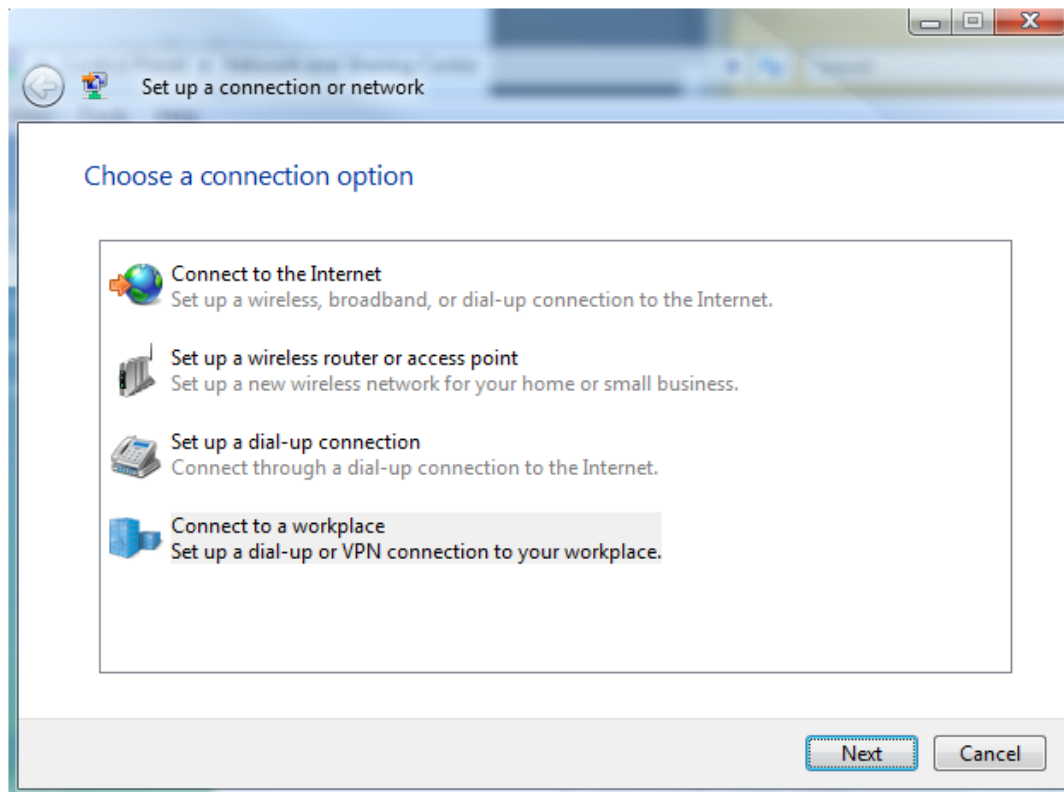
1. Log in to your Windows Vista computer. Click on Start > Control Panel.
2. When you are in the Control Panel double-click on the 'Network and Sharing Center' icon.



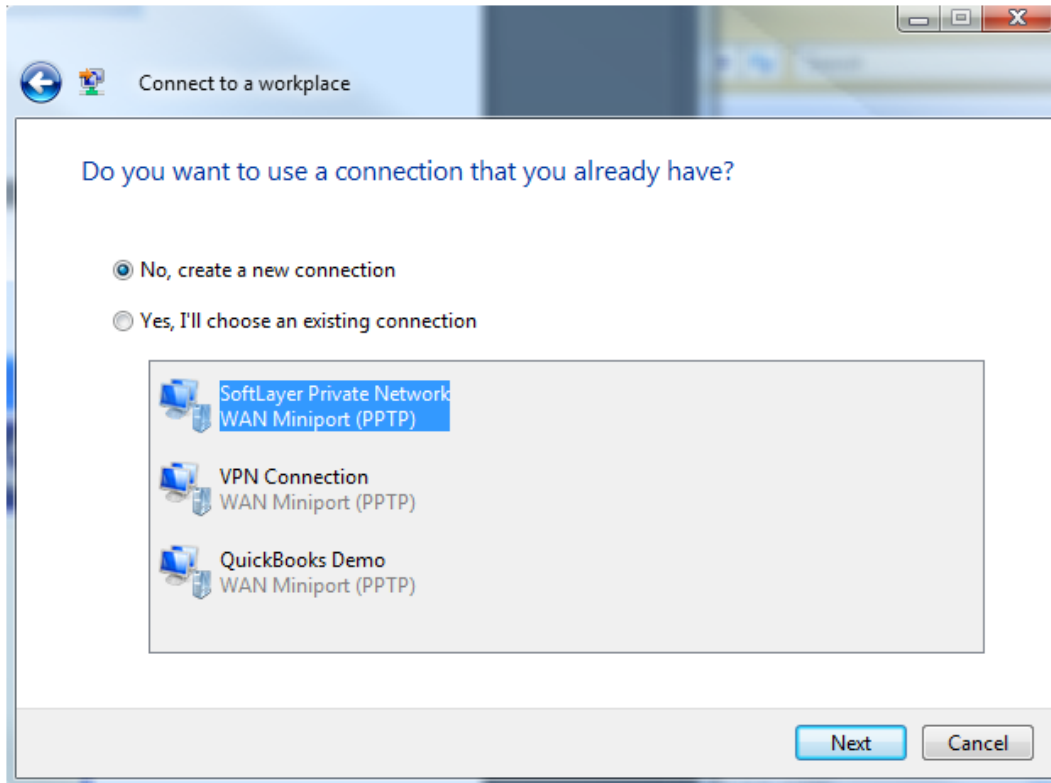
3. In Network and Sharing Center click on the 'Set up a connection or network' link from the left-hand menu.



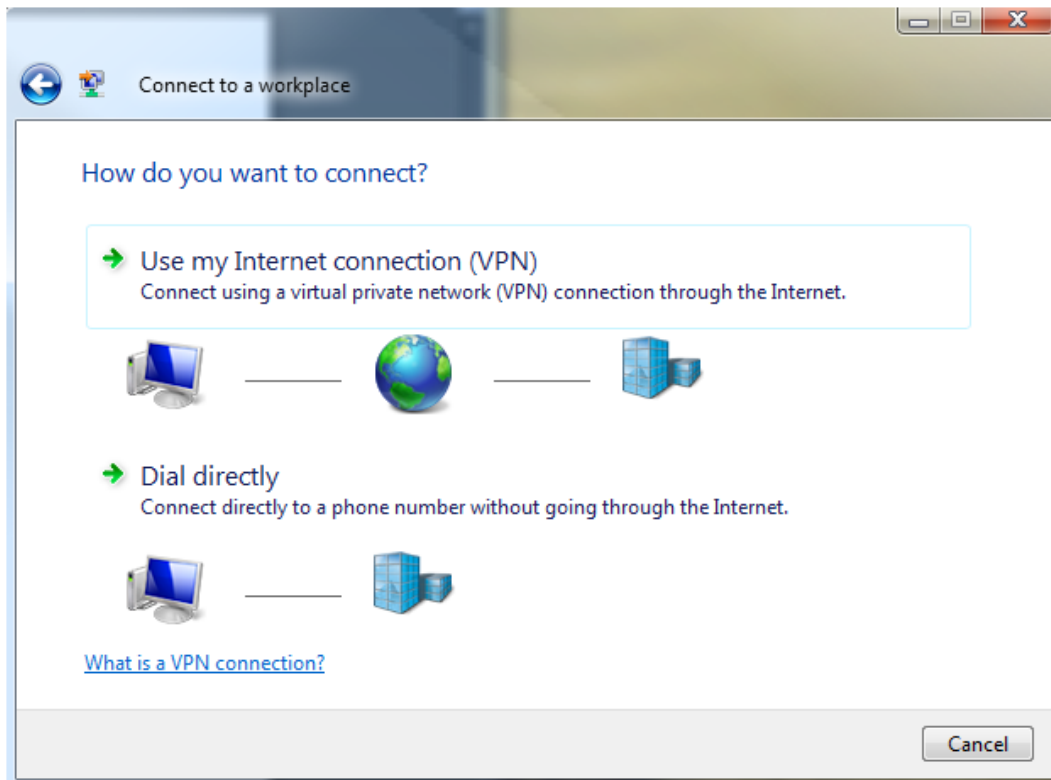
4. When the set up a connection wizard starts, select 'Connect to a workplace' and then click on the 'Next' button.



5. Select 'No, create a new connection' and then click the 'Next' button.



6. Click on 'Use my Internet connection (VPN).'



7. Enter the **Public IP address** of your BRI Hosting VPS as the Internet address and a descriptive name as the Destination name, and then enable the 'Don't connect now' setting. Click the 'Next' button.

Connect to a workplace

Type the Internet address to connect to

Your network administrator can give you this address.

Internet address: 127.0.0.1

Destination name: My BRI Hosting VPS

Use a smart card

Allow other people to use this connection
This option allows anyone with access to this computer to use this connection.

Don't connect now, just set it up so I can connect later

Next Cancel

8. Enter your user name and password, and then click the 'Create' button.

Connect to a workplace

Type your user name and password

User name: username

Password:

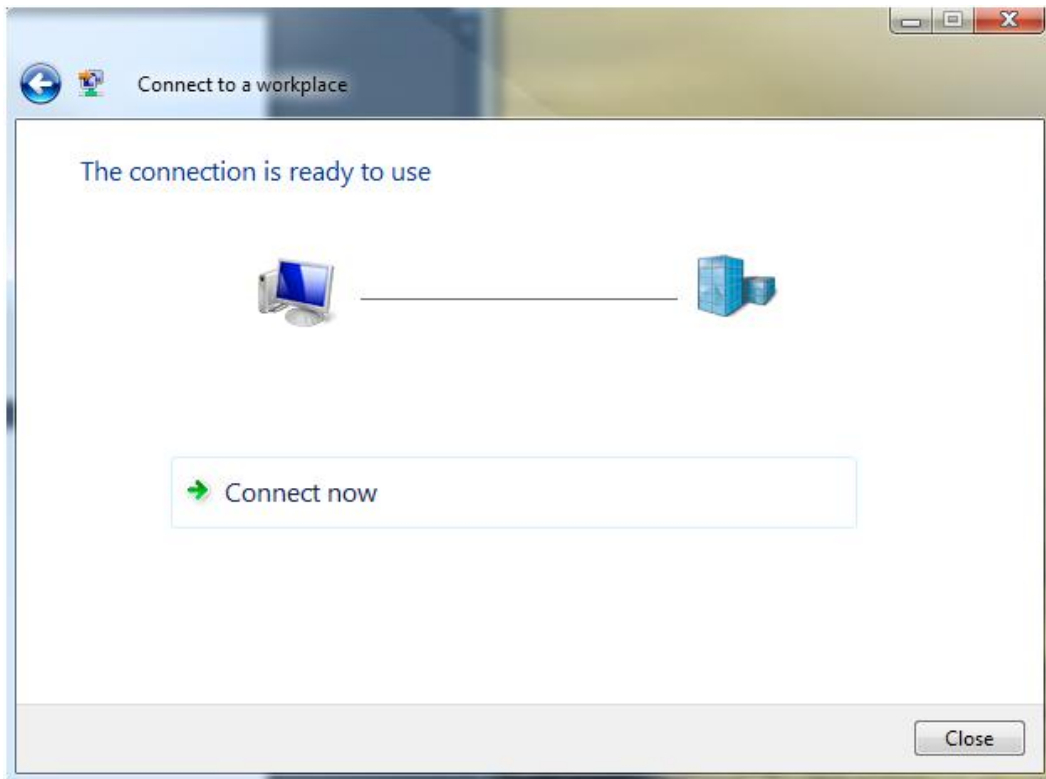
Show characters

Remember this password

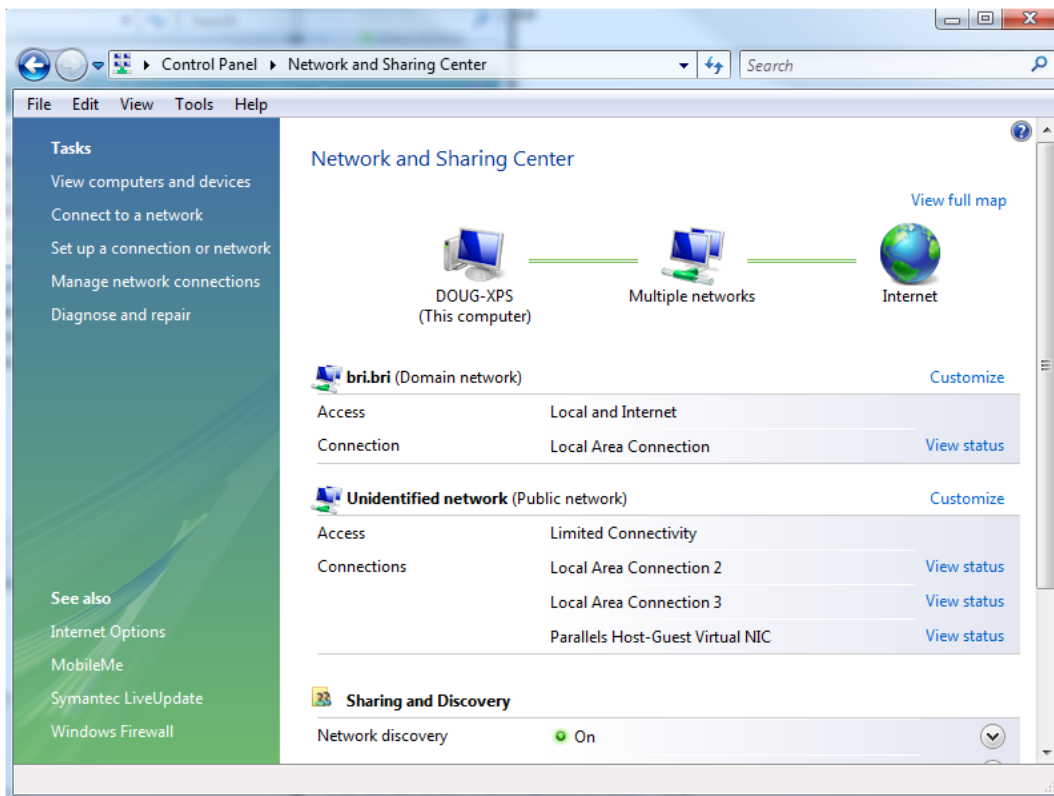
Domain (optional):

Create Cancel

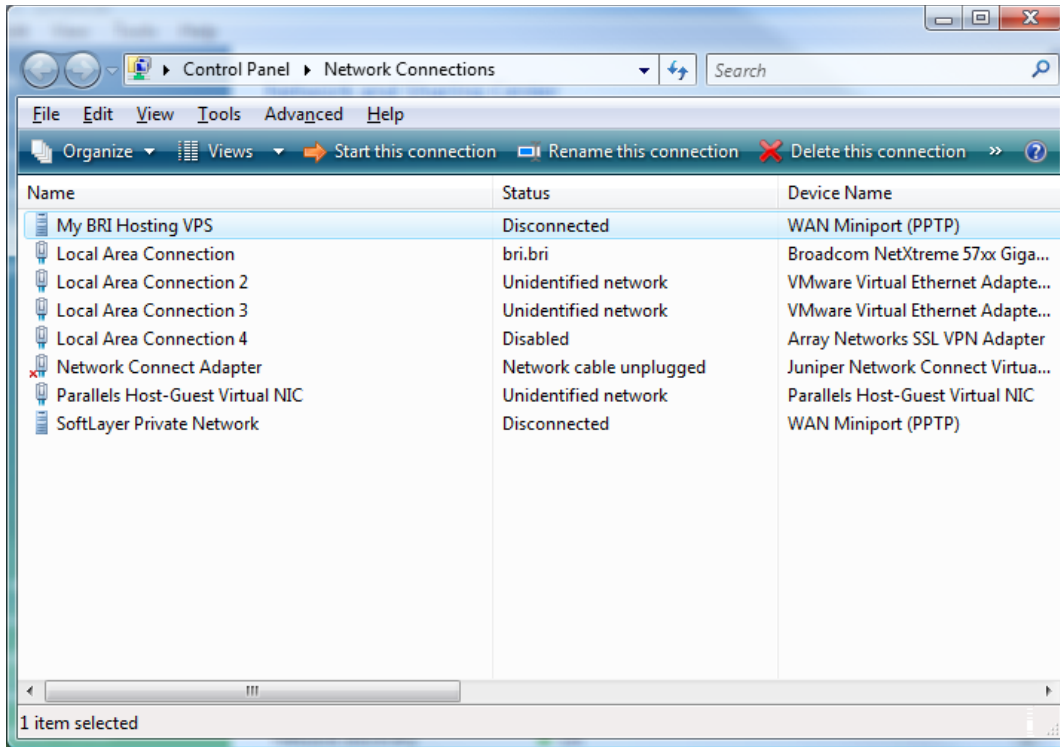
9. When the wizard is completed click the 'Close' button.



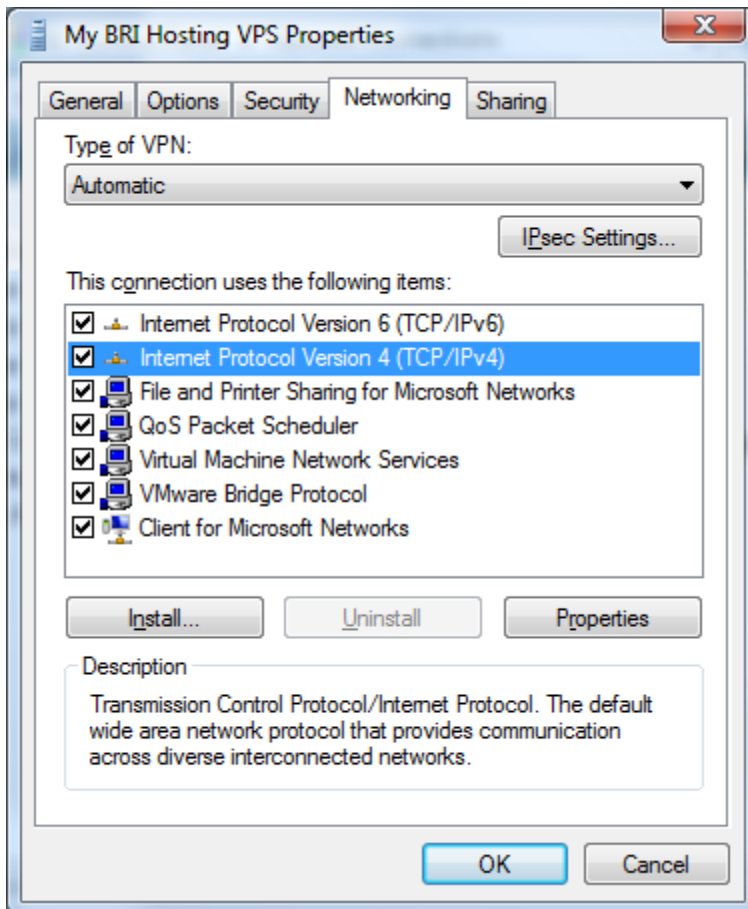
10. Return to the Network and Sharing Center. Click on the 'Manage network connections' link from the left-hand menu.



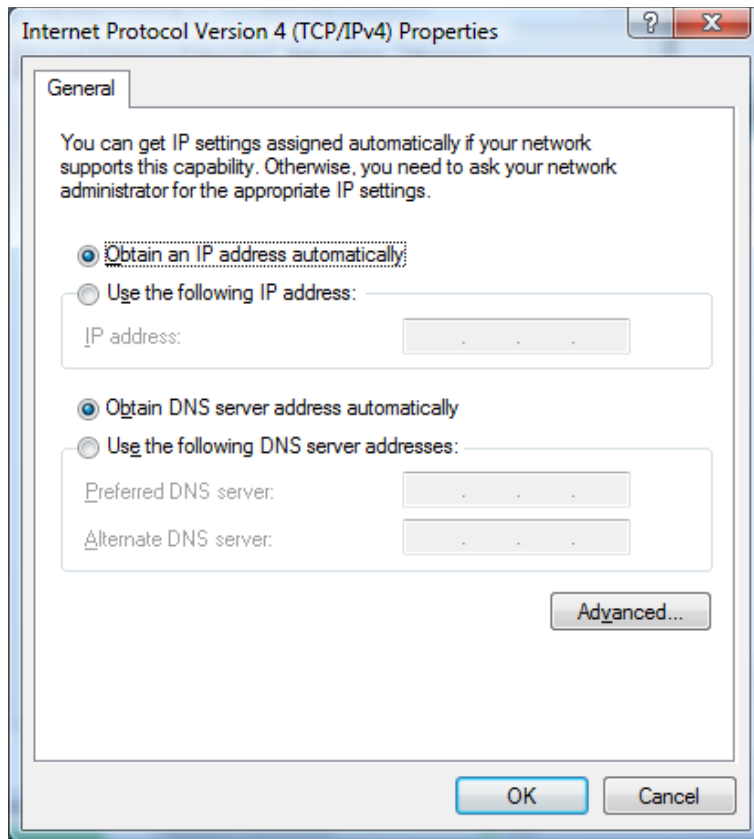
11. Select the network connection you just created item in the list, then select File > Properties.



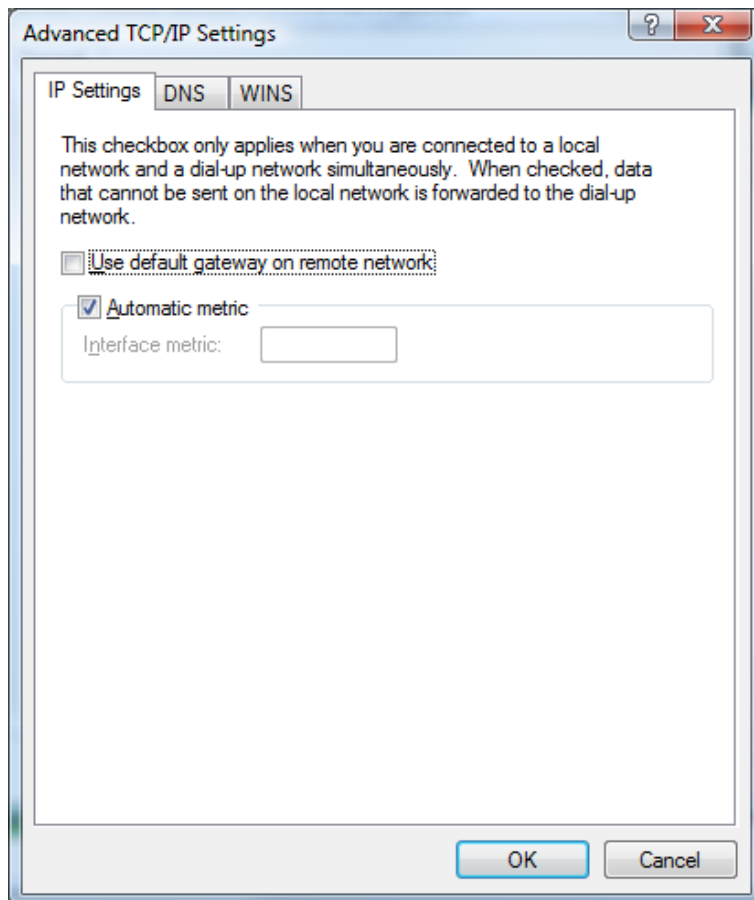
12. In the properties window, select the 'Networking' tab. Select the 'Internet Protocol Version 4 (TCP/IPv4)' item from the list and then click the 'Properties' button.



13. In the Internet Protocol Version 4 (TCP/IPv4) Properties window click on the ‘Advanced...’ button.



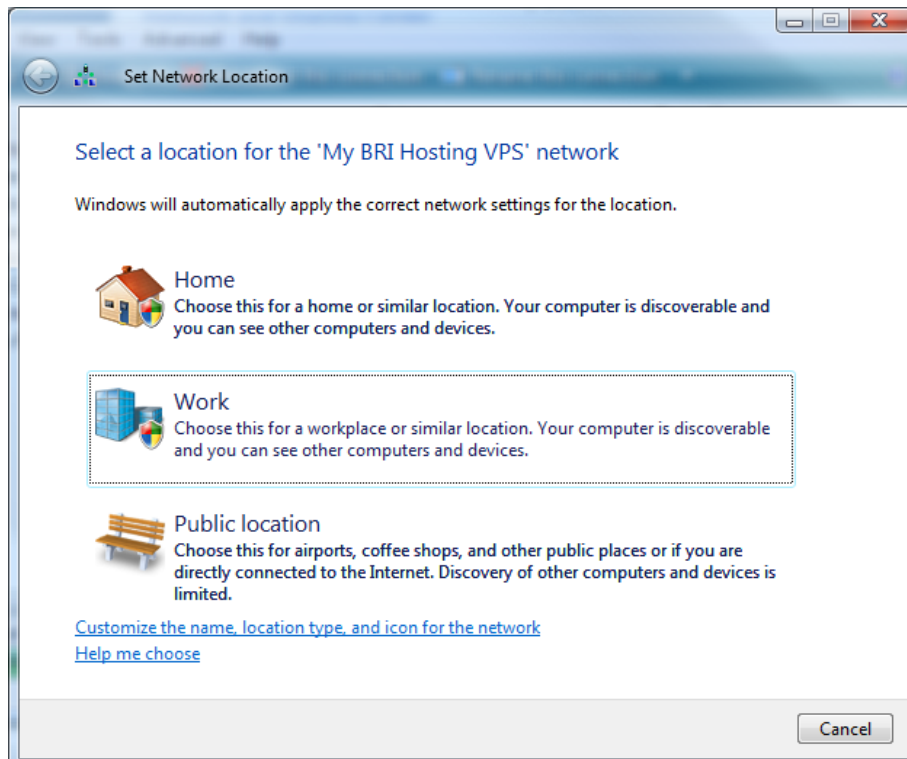
14. Uncheck the ‘Use default gateway on remote network’ setting and click the ‘OK’ button.



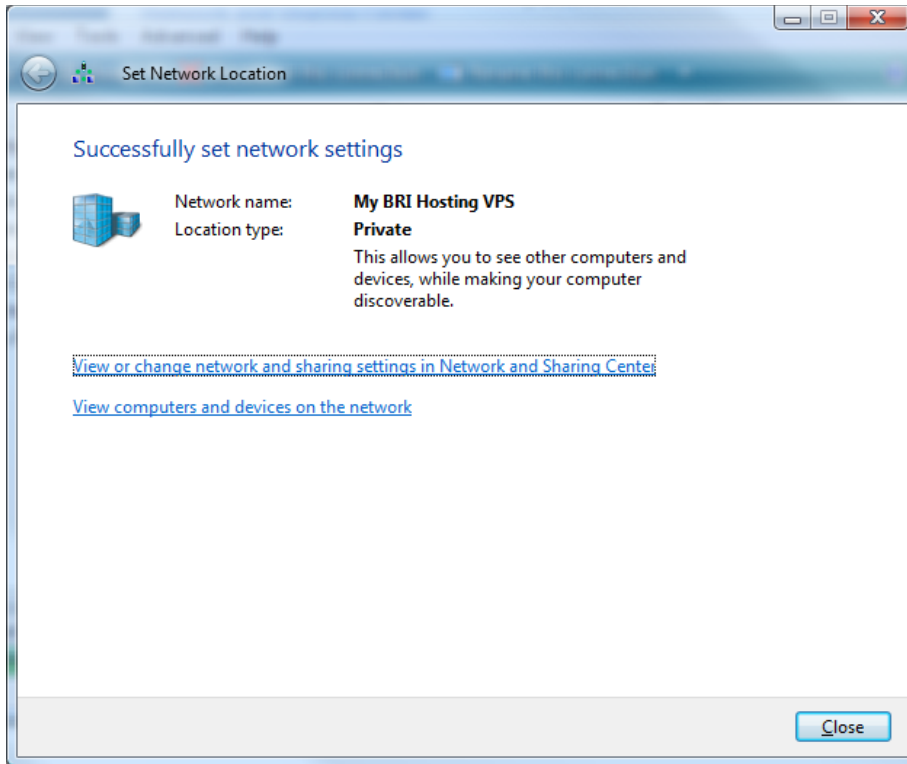
15. Click the 'OK' button and the Internet Protocol Version 4 (TCP/IPv4) Properties window, and again on the connection properties window.
16. When you return to the Network Connections window double-click on the network connection you just created, and when prompted enter your user name and password and click the 'Connect' button.



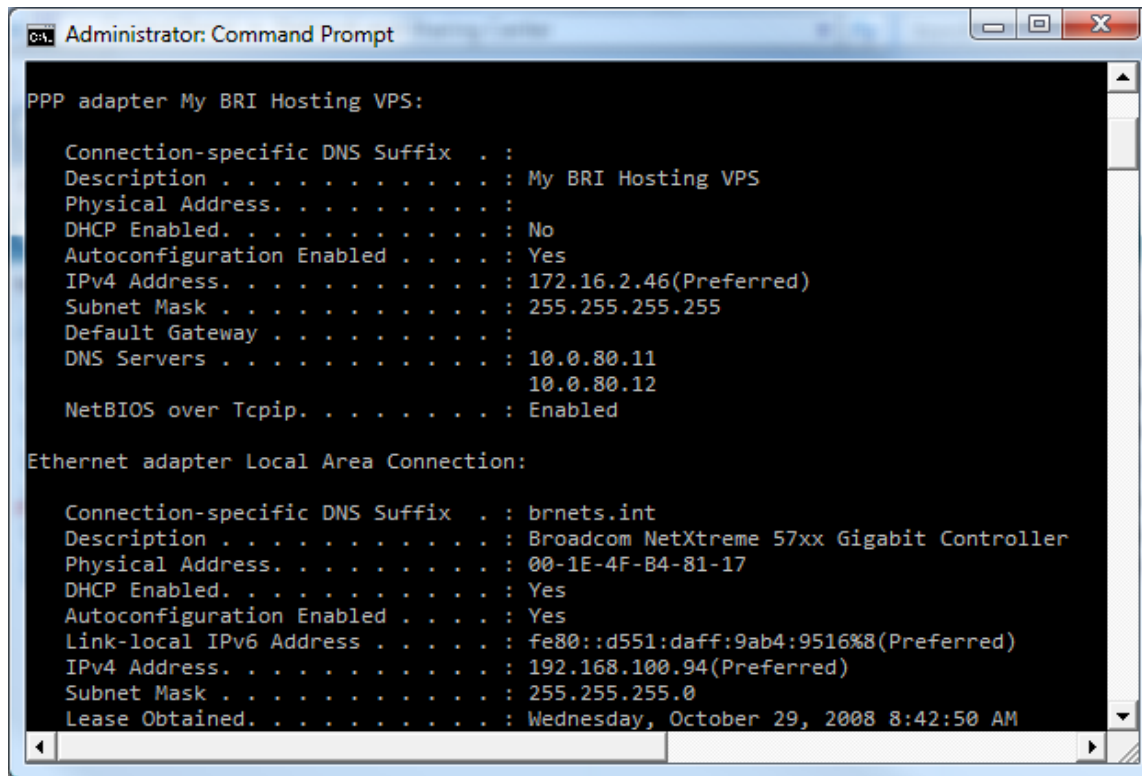
17. When you are connected you will likely be prompted to select a network location. Select 'Work'.



18. Your VPN connection has been created successfully! Click the 'Close' button.



19. To verify that you have connected successfully, open a command prompt by clicking Start and in the *Start* Search box enter 'cmd' and then click hit enter.
20. At the prompt enter 'ipconfig /all' (without the quotes) and hit enter. You should see output that includes 'PPP adapter ...'.



```
Administrator: Command Prompt

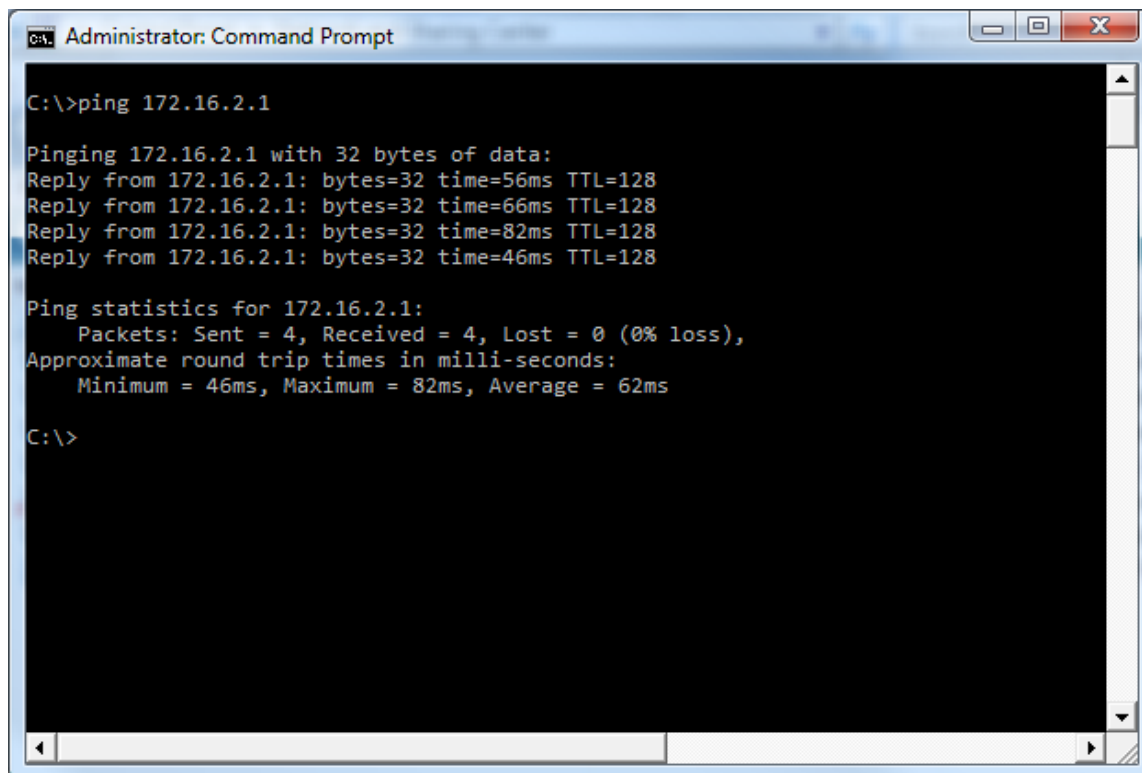
PPP adapter My BRI Hosting VPS:

    Connection-specific DNS Suffix  . : 
    Description . . . . . : My BRI Hosting VPS
    Physical Address. . . . . : 
    DHCP Enabled. . . . . : No
    Autoconfiguration Enabled . . . . : Yes
    IPv4 Address. . . . . : 172.16.2.46(Preferred)
    Subnet Mask . . . . . : 255.255.255.255
    Default Gateway . . . . . : 
    DNS Servers . . . . . : 10.0.80.11
                           10.0.80.12
    NetBIOS over Tcpi. . . . . : Enabled

Ethernet adapter Local Area Connection:

    Connection-specific DNS Suffix  . : brnests.int
    Description . . . . . : Broadcom NetXtreme 57xx Gigabit Controller
    Physical Address. . . . . : 00-1E-4F-B4-81-17
    DHCP Enabled. . . . . : Yes
    Autoconfiguration Enabled . . . . : Yes
    Link-local IPv6 Address . . . . . : fe80::d551:daff:9ab4:9516%8(Preferred)
    IPv4 Address. . . . . : 192.168.100.94(Preferred)
    Subnet Mask . . . . . : 255.255.255.0
    Lease Obtained. . . . . : Wednesday, October 29, 2008 8:42:50 AM
```

21. Then at the command prompt enter ping and the **Private IP Address** of your BRI Hosting VPS. For example, 'ping 192.168.1.1' (without the quotes). You should see output that includes replies from the IP address you entered.



```
Administrator: Command Prompt

C:\>ping 172.16.2.1

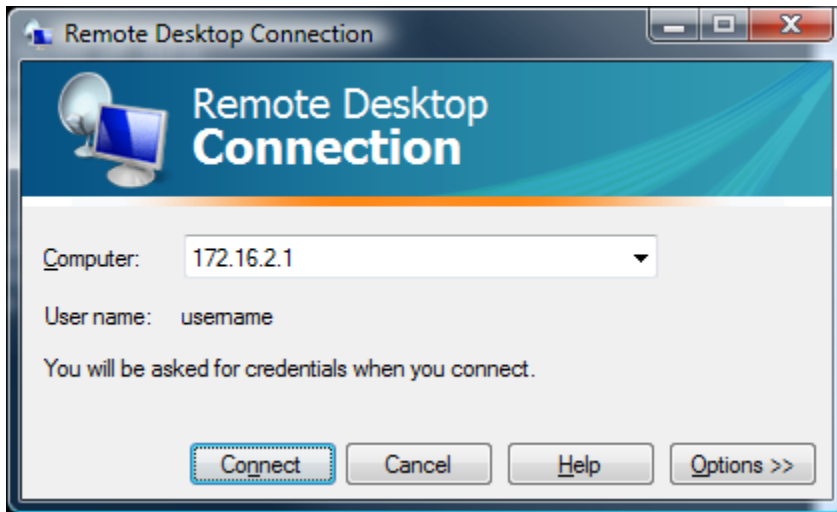
Pinging 172.16.2.1 with 32 bytes of data:
Reply from 172.16.2.1: bytes=32 time=56ms TTL=128
Reply from 172.16.2.1: bytes=32 time=66ms TTL=128
Reply from 172.16.2.1: bytes=32 time=82ms TTL=128
Reply from 172.16.2.1: bytes=32 time=46ms TTL=128

Ping statistics for 172.16.2.1:
    Packets: Sent = 4, Received = 4, Lost = 0 (0% loss),
    Approximate round trip times in milli-seconds:
        Minimum = 46ms, Maximum = 82ms, Average = 62ms

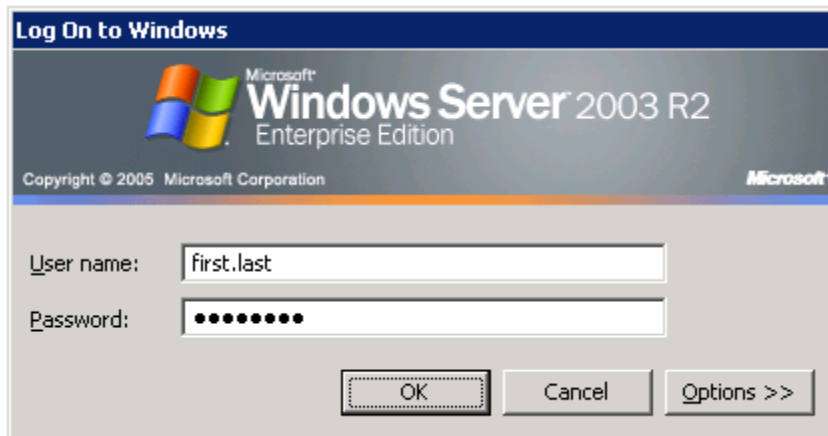
C:\>
```

To log in to your BRI Hosting VPS

1. Click on Start > All Programs > Accessories > Remote Desktop Connection. Enter the **Private IP Address** of you BRI Hosting VPS as the computer and click the 'Connect' button.



2. You will be prompted to enter your user name and password to log on to Windows. Enter your user name and password and click the 'OK' button.



3. **You are now connected your BRI Hosting VPS over a secure connection!**