

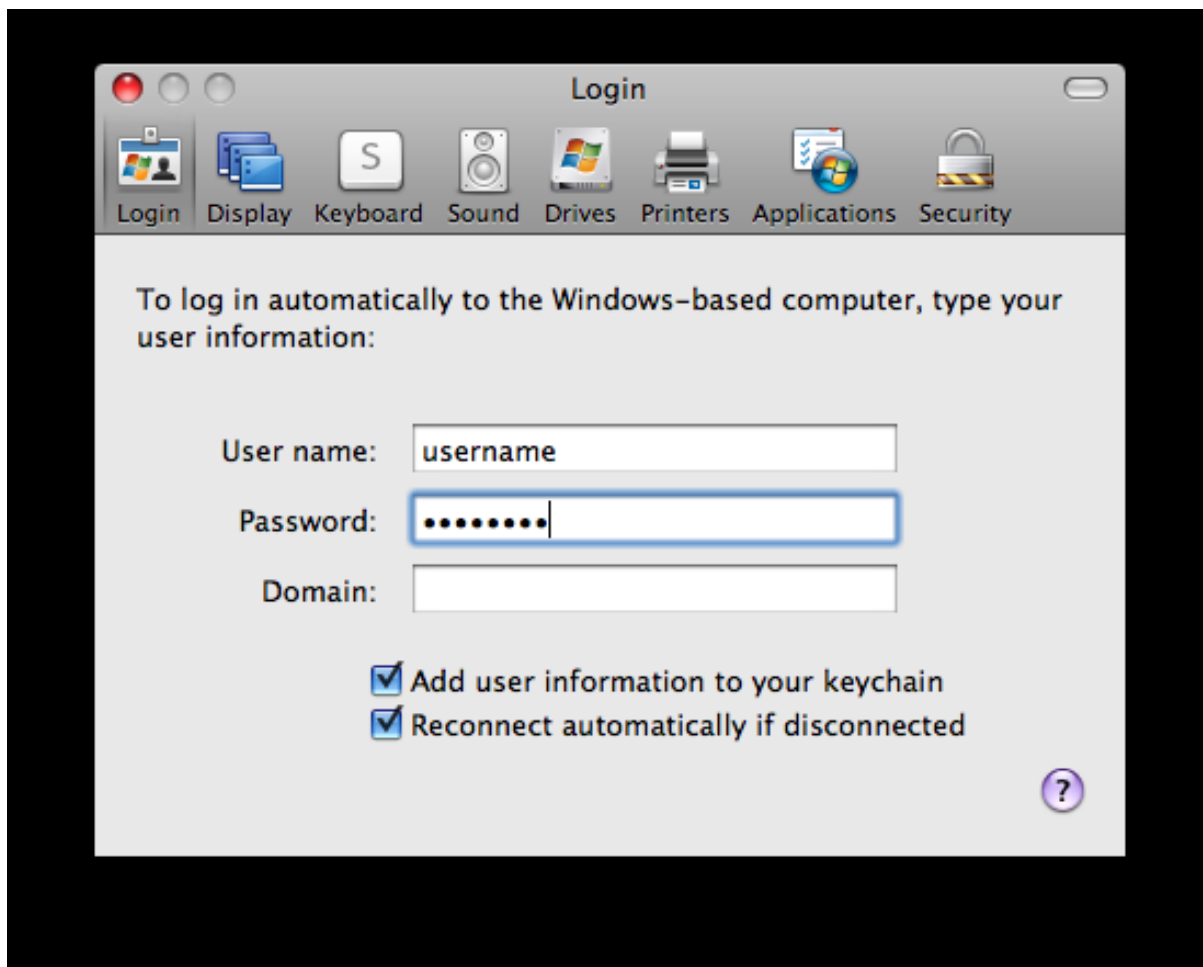
# How to Create a Remote Desktop Connection to your BRI Hosting VPS

The following process describes the necessary steps to map a local drive on your Mac to your BRI Hosting VPS. The Remote Desktop Connection client for the Mac can be found here <http://www.microsoft.com/mac/products/remote-desktop/default.mspx>.

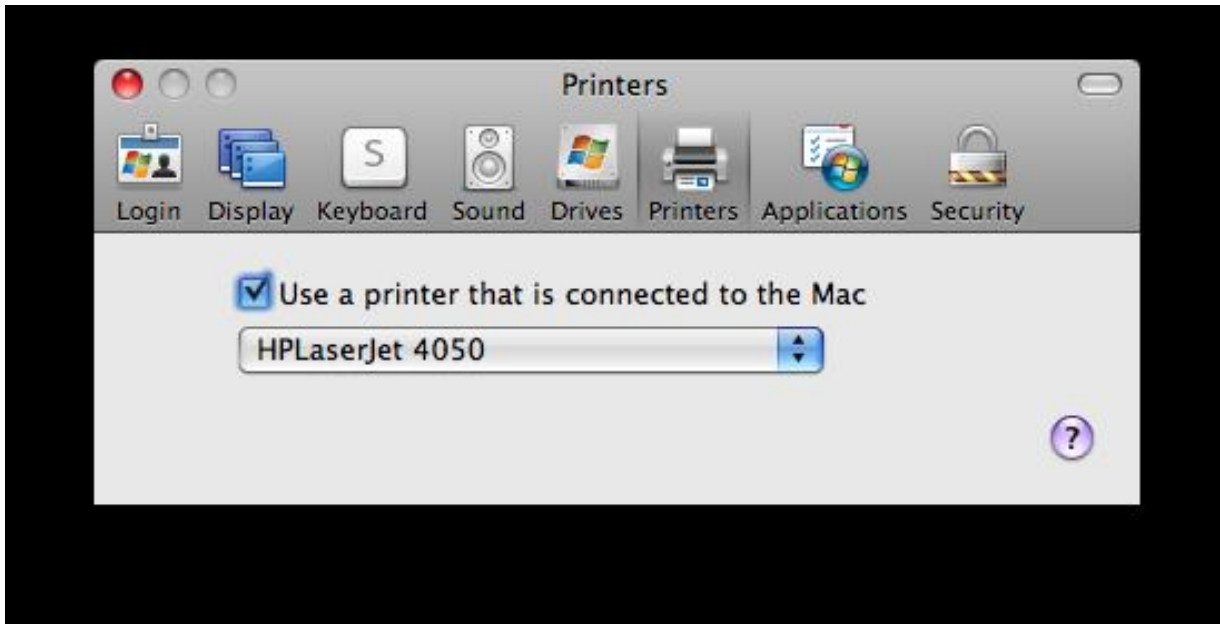
1. Log in to your Mac and start the Remote Desktop Connection application.



2. Click on the RDC menu and then the Preferences menu.



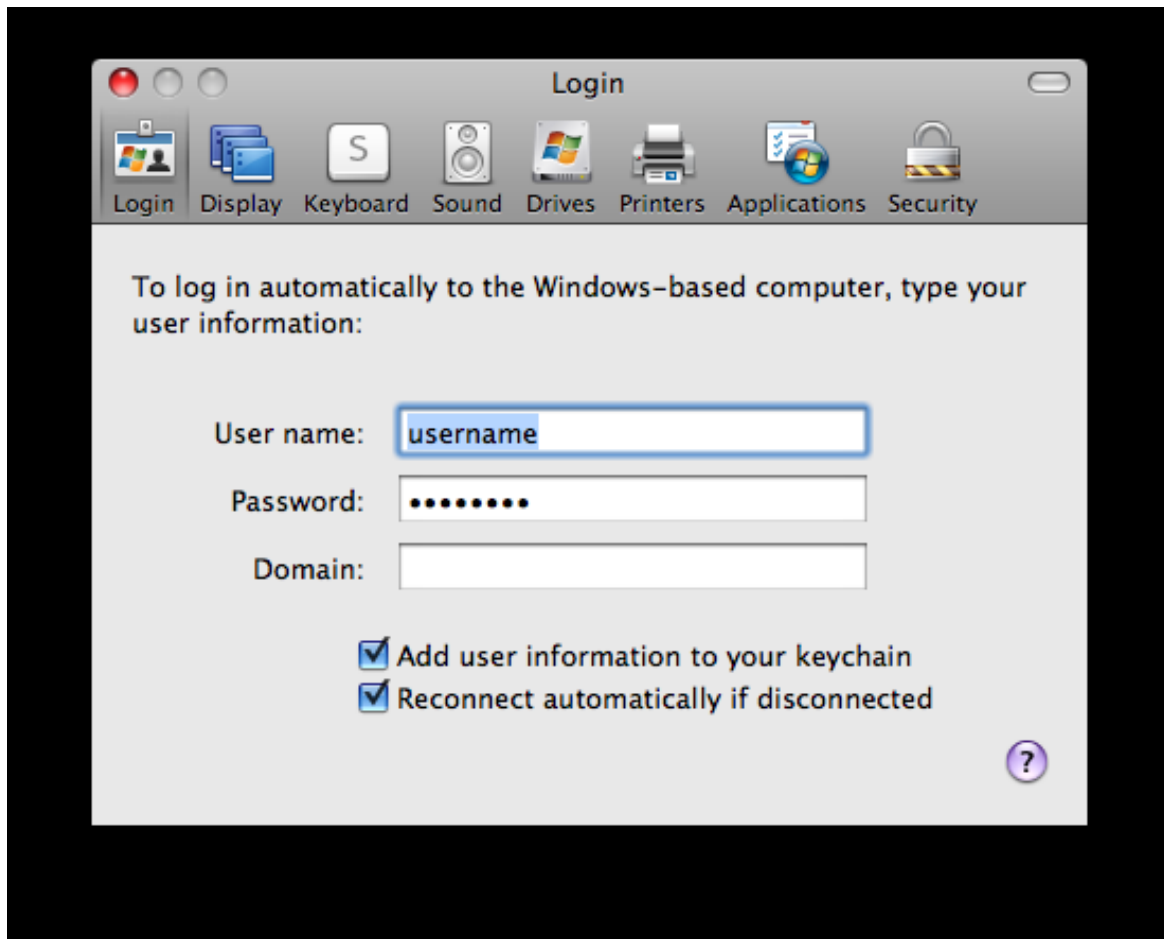
3. Click on the 'Printers' tab and select the printer that you want to make available on your BRI Hosting VPS.



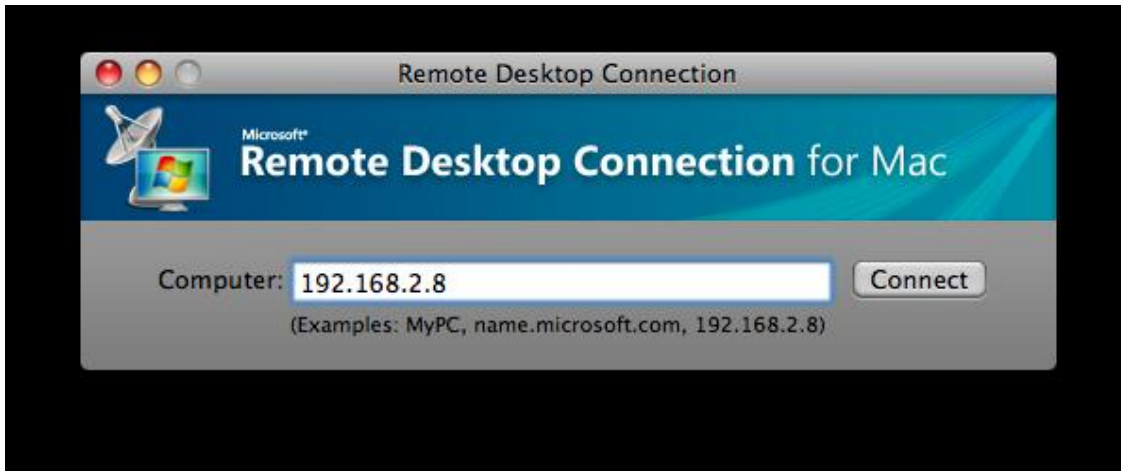
4. Click on the 'Drives' tab and select the folder that you want to make available on your BRI Hosting VPS.



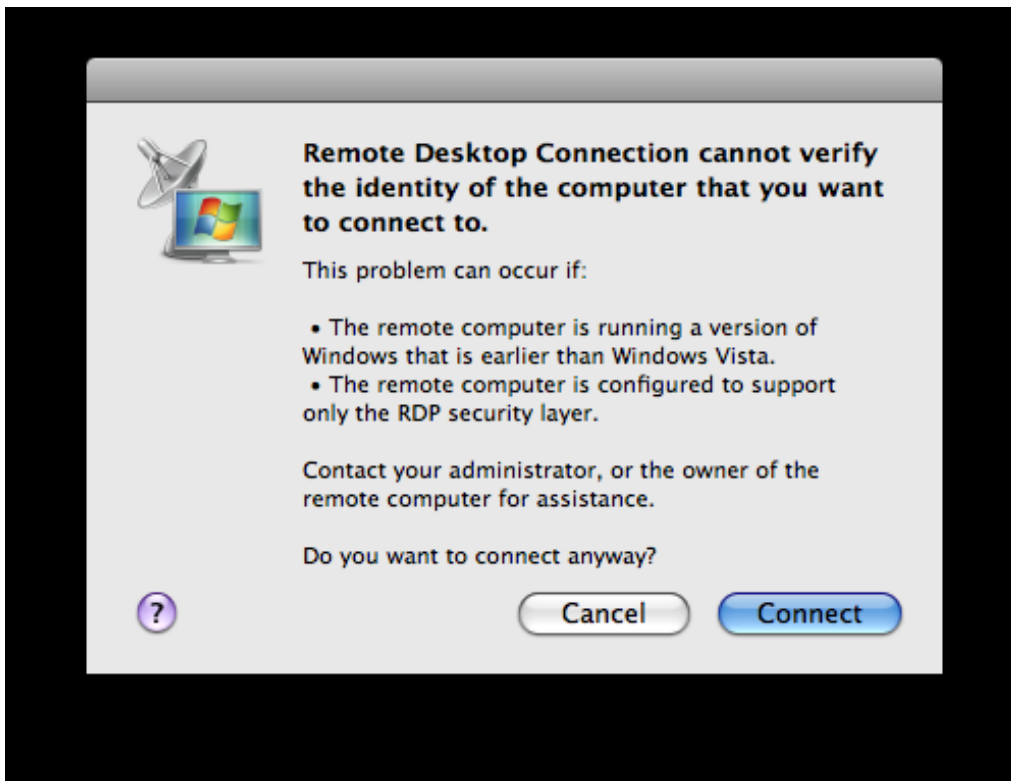
5. Click on the 'Login' tab and enter your BRI Hosting VPS user name and password.



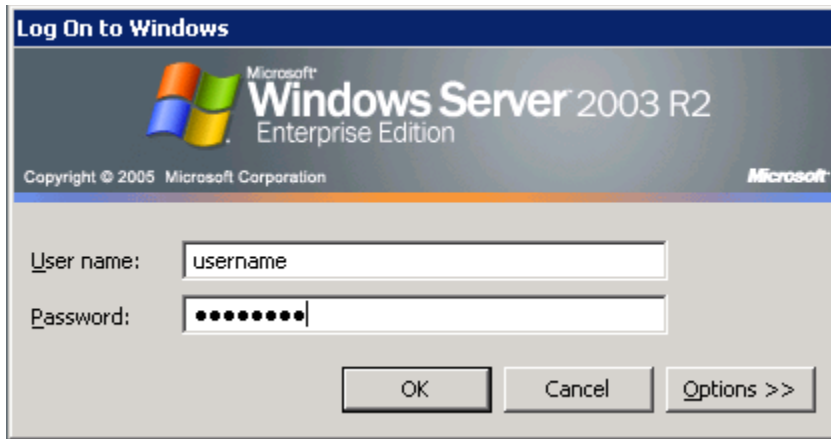
6. Close the preferences window.
7. Enter the **Public IP Address** of your BRI Hosting VPS and your user name and password.
  - a. NOTE: If you have connected to your BRI Hosting VPS via VPN, you can use the **Private IP Address**.



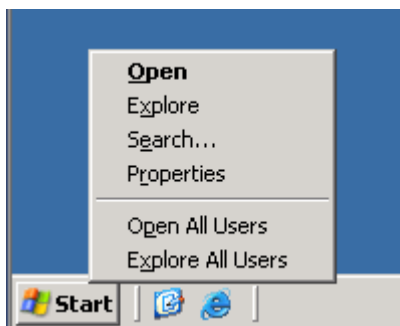
8. Click on the 'Connect' button.
9. If prompted, you will be notified about the risk associated with connecting to a computer that cannot be verified. Click the 'Connect' button.



10. Enter your user name and password, if prompted, and click the 'OK' button.



11. After you have logged in, right-mouse click on the Start menu and click 'Explore'.



12. Your local drive and printer are now available on your BRI Hosting VPS!

