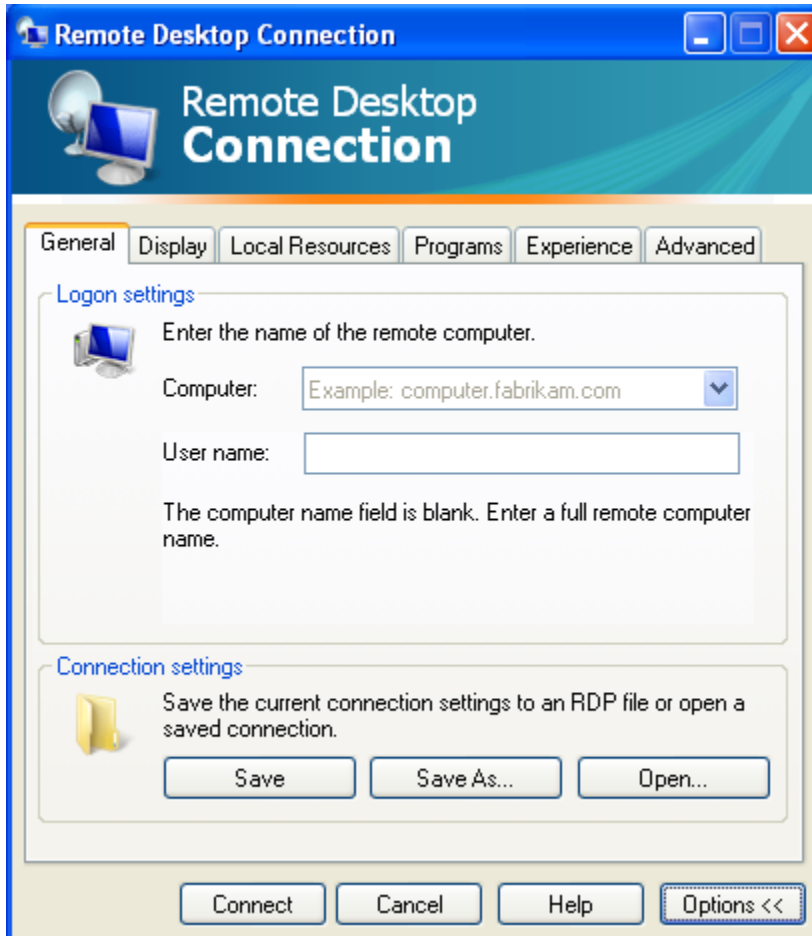


# How to Create a Remote Desktop Connection to your BRI Hosting VPS

The following process describes the necessary steps to map a local drive on your PC to your BRI Hosting VPS.

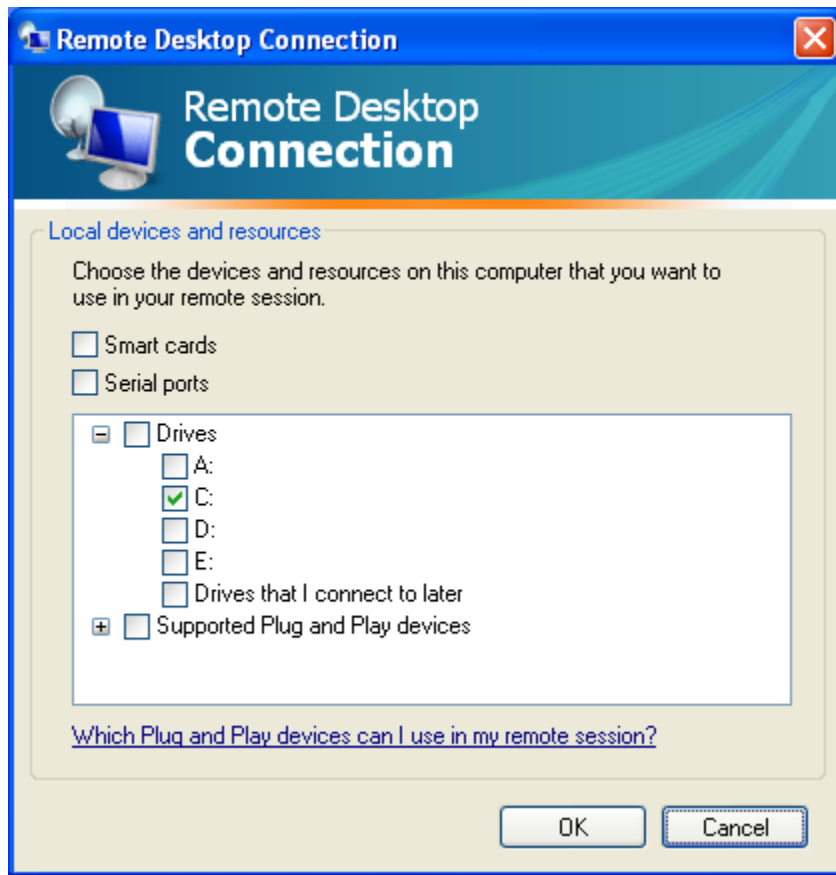
1. Log in to your Windows XP computer. Click on Start > All Programs > Accessories > Remote Desktop Connection.
2. Click on the 'Options >>' button.



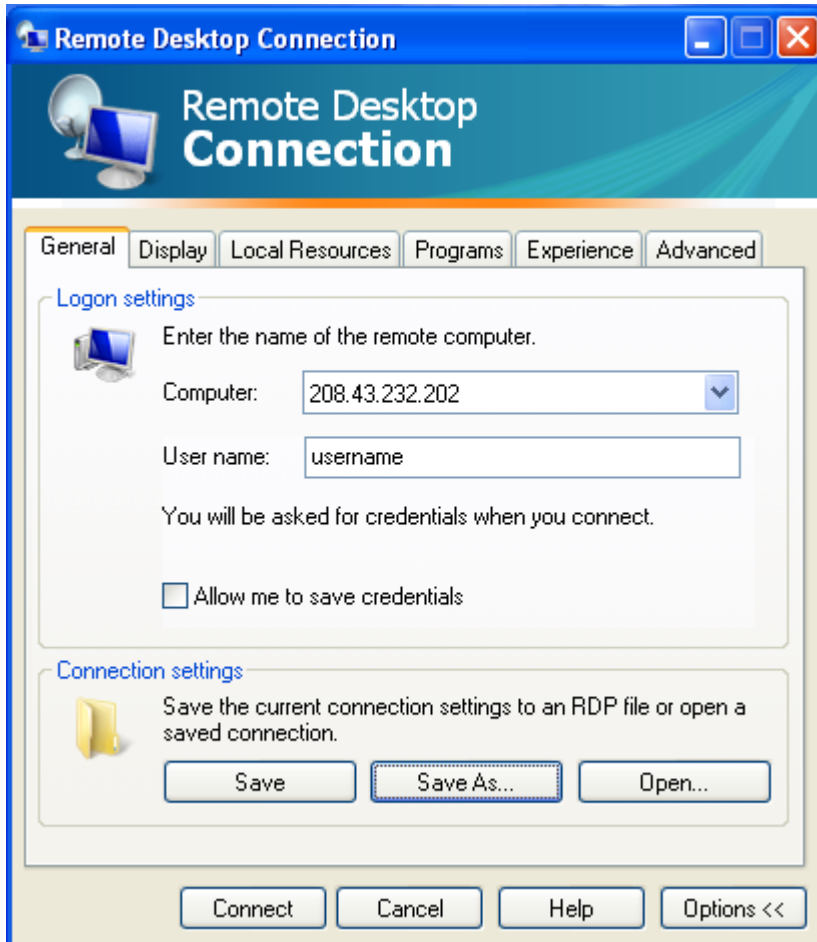
3. Click on the 'Local Resources' tab.



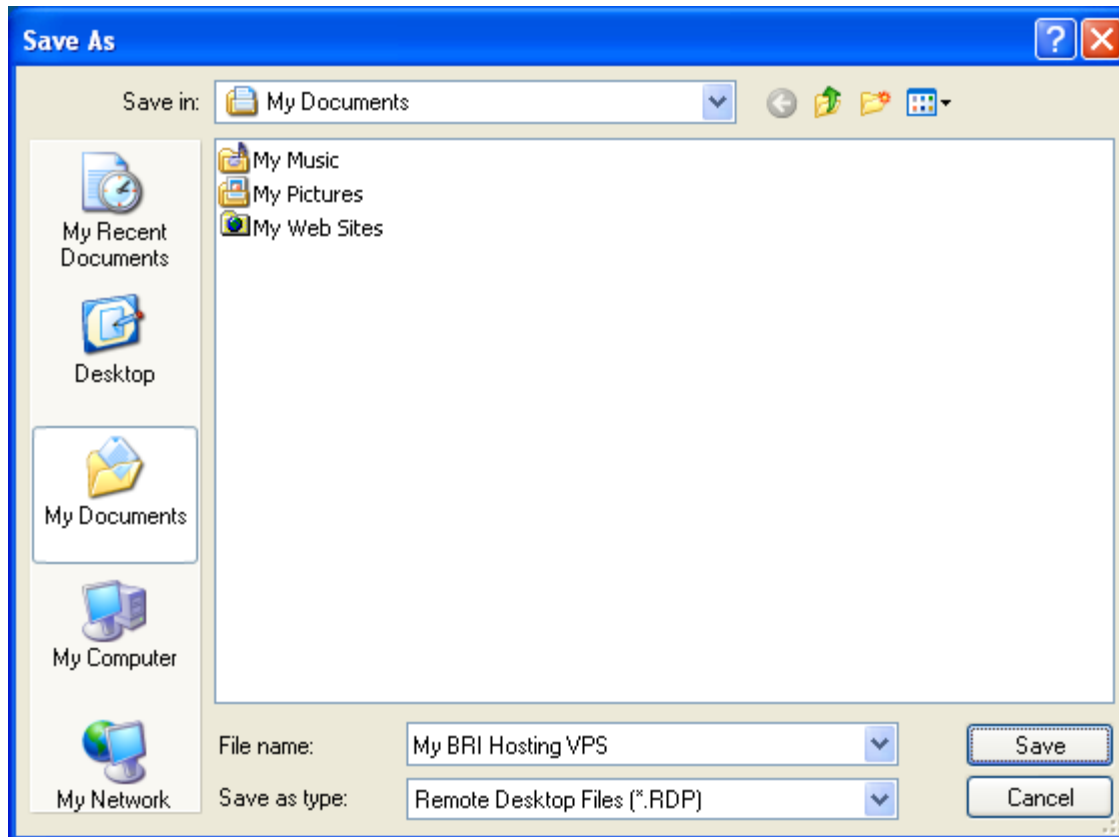
4. Click on the 'More...' button.
5. Expand the list of drives and select the drive(s) that you would like to use in your remote session, and then click the 'OK' button.



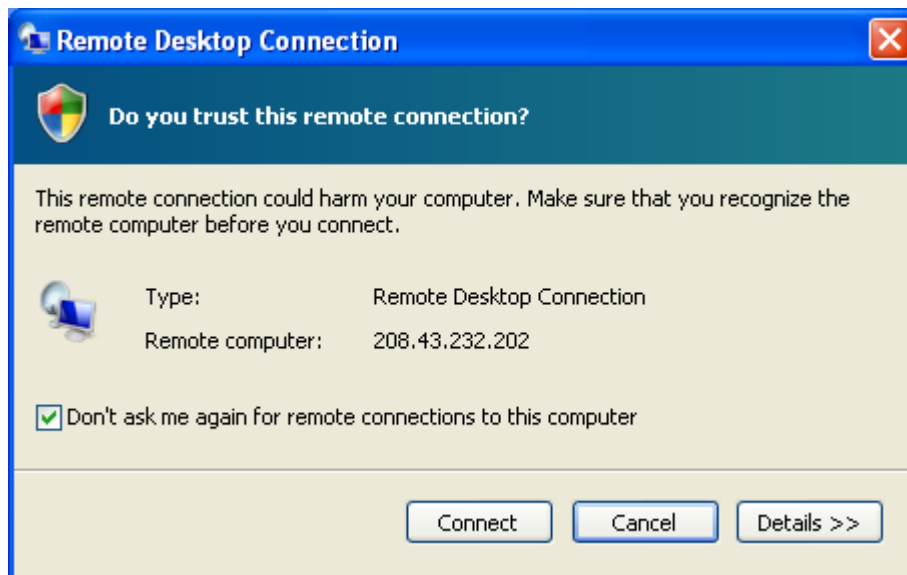
6. Click on the 'General' tab and then enter the **Public IP Address** of your BRI Hosting VPS and your user name and password.
  - a. NOTE: If you have connected to your BRI Hosting VPS via VPN, you can use the **Private IP Address**.
7. Click on the 'Save As...' button to save this configuration for later use.



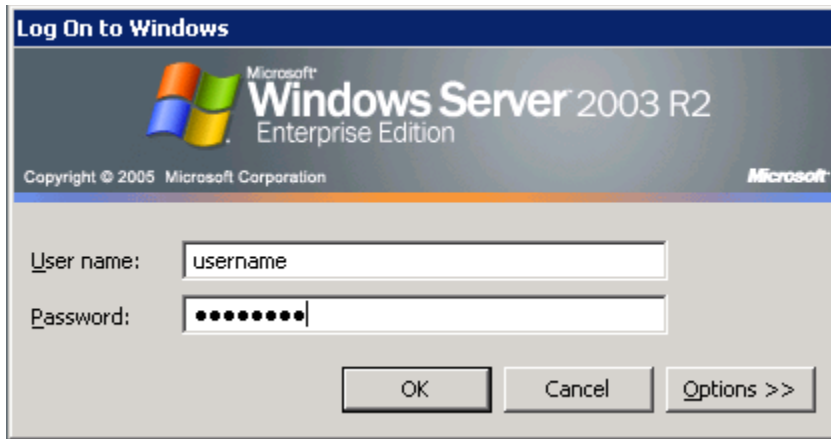
- In the File name field and a descriptive name to easily remind you which server this remote desktop connection connects to and click the 'Save' button.



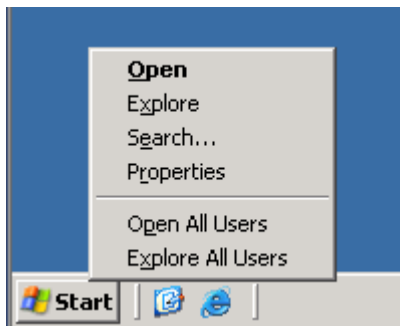
- Click on the 'Connect' button.
- If prompted, you will be notified about the risk associated with making local resources available on a remote computer. Click the 'Connect' button.



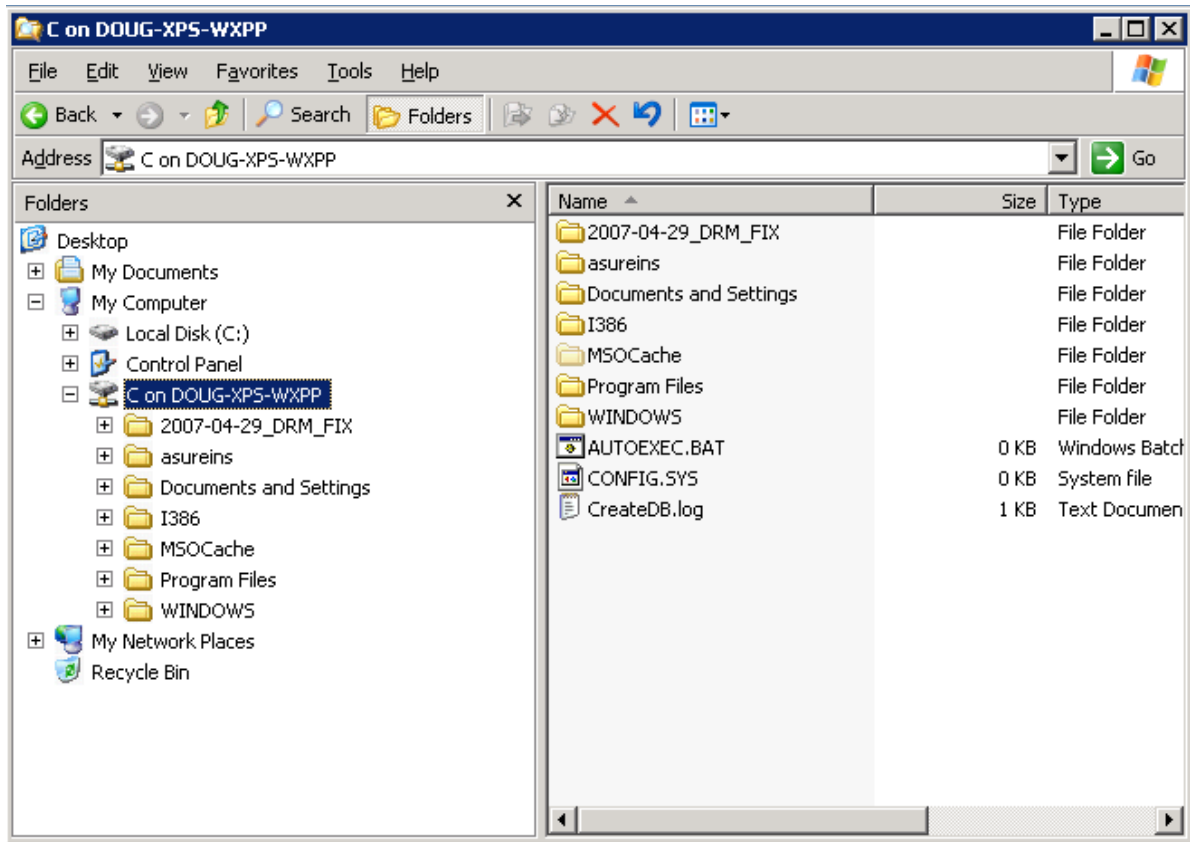
11. Enter your user name and password, if prompted, and click the 'OK' button.



12. After you have logged in, right-mouse click on the Start menu and click 'Explore'.



13. Your local drive is available on your BRI Hosting VPS!

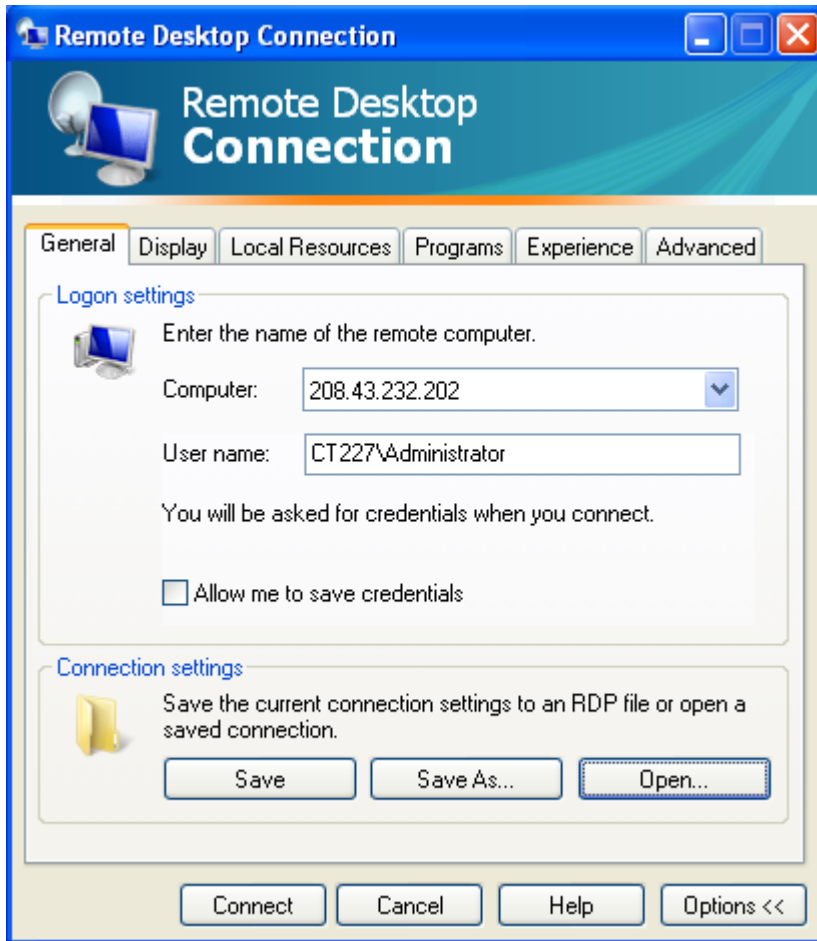


# Reconnecting to your BRI Hosting VPS

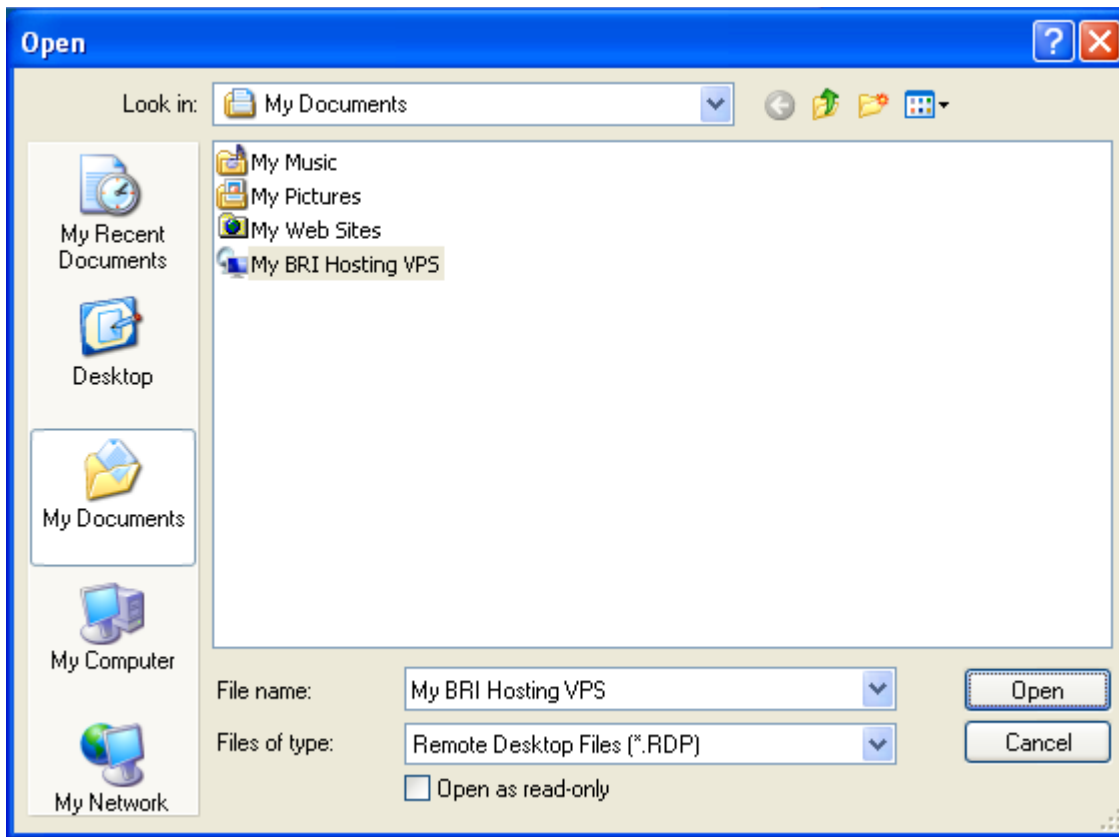
14. In order open your saved Remote Desktop connection sessions open Remote desktop and click the 'Options >>' button.



15. Then click on the 'Open...' button.



16. Browse to the folder where you previously saved the RDP connection settings. Select the file and click the 'Open' button.



17. Then click the 'Connect' button.

